



## 2000-2001 End-of-Grade Multiple-Choice Test Results

October 16, 2001

*Authors: Chuck Dulaney and Glenda Burch*

### Background

Wake County Public School System (WCPSS) students took the North Carolina End-of-Grade (EOG) multiple-choice tests during the months of May and June. Traditional calendar schools tested the week of May 22-26 and year-round schools tested the week of June 19-23.

The EOG tests have several components including: computer skills, open-ended tests, multiple-choice tests, and the writing assessment. All EOG tests are designed to measure student achievement of the knowledge and skills of the North Carolina Standard Course of Study for students in grades three through eight. The multiple-choice tests are required in reading and math and are optional in social studies and science. During the May/June 2001 administration, WCPSS students took the reading and math multiple-choice tests.

The EOG tests are a vital part of the North Carolina Annual Testing Program. They are the basis for the accountability program referred to as “ABCs”—Accountability, Basics, and Control. The goal of the ABCs is to hold individual schools accountable for student achievement in the basic subjects of reading and math. Under this program, test scores will be the basis for rewards or corrective action for individual schools.

### Districtwide Results

WCPSS EOG multiple-choice results for 2000-2001 showed increases at all grade levels in both proficiency and average scale score in reading. In math, results show increases in proficiency at all grade levels. Math scale score ranges were recalculated by NCDPI for 2001 and comparisons to previous years are not valid.

- More than 90% of students scored at or above grade level in reading in grades 5 and 8 and in math in grades 4 and 5.
- More than 85% of students scored at or above grade level in reading in grades 3, 4, 5, 7, and 8 and in math in grades 4-8.
- No grade level showed a decrease.

### Achievement Over Time

The percentage of students meeting or exceeding grade level standards in reading and math in all grade levels are the highest WCPSS students have ever achieved (see figures 1-4). Average reading scale scores also reached new highs in all grade levels (see figures 5 and 6).

### Disaggregated Results

Gains in reading were shown by almost all race and gender groups at all grade levels. At grade 7, slight decreases were seen for female, Asian, Hispanic, and multiracial groups. The largest gains were made by previously lower-performing groups. (See figures 7-12 on pages 5 and 6).

For example, the percentage of Black students in grade 4 meeting or exceeding grade level standards in reading rose from 57.4% in 2000 to 65.3% in 2001. The percentage of Black students in grade 5 meeting or exceeding grade level

standards rose from 68.9% in 2000 to 76.8% in 2001. The percentage of Hispanic students at or above grade level in reading rose from 65.4% in 2000 to 74.5% in grade 3, and from 66.7% to 79.9% in grade 8. Students receiving free or reduced lunch showed improvements in reading at all grade levels, ranging from a 1.5 percentage point increase at grade 7 to an 8.9 percentage point increase at grade 5.

Math gains were greater than reading gains in 2001. Eighth-grade Hispanic students showed an 11.6 point gain in the percentage of students at or above grade level from 2000 to 2001. Black students showed gains ranging from 2.3 percentage points at grade 8 to 8.2 percentage points at grade 3. Grade 7 showed a very small drop in percent at grade level for students not receiving free lunch (-.3), Asian students (-.9), Hispanic students (-1.2) and multiracial students (-6.0).

### Achievement Level Scores

The achievement level score attempts to categorize student achievement according to four broad levels, defined by the North Carolina Department of Public Instruction (NCDPI) as follows:

#### Achievement Levels

**Level I:** Students performing at this level do not have sufficient mastery of knowledge and skills in this subject area to be successful at the next grade level.

**Level III:** Students performing at this level consistently demonstrate mastery of grade level subject matter and skills and are well prepared for the next grade level.

**Level II:** Students performing at this level demonstrate inconsistent mastery of knowledge and skills in this subject area, and are minimally prepared to be successful at the next grade level.

**Level IV:** Students performing at this level consistently perform in a superior manner clearly beyond that required to be proficient at grade level work.

One important way of examining test scores is to follow the progress of a cohort of students over time. The shaded and unshaded boxes in the tables below show the scores of cohorts of students. For example, one cohort of students was in 3<sup>rd</sup> grade in 1996 and completed 8th grade in 2001. Over time the percentage of students in that cohort who were in levels III and IV and therefore considered to be “at or above grade level” in reading increased from 76.3% to 90.6%.

**Figure 1**  
**WCPSS Reading Achievement Levels Over Time**  
**Percentage of Students at Levels III and IV**

Grade	1995	1996	1997	1998	1999	2000	2001
3	74.4	76.3	75.3	79.3	80.4	83.1	85.3
4	75.2	79.9	78.7	80.3	80.8	81.6	85.9
5	79.6	77.7	80.3	84.3	84.8	87.7	90.8
6	76.8	78.8	77.8	78.8	80.7	77.9	80.7
7	80.2	78.1	78.6	80.5	84.9	84.4	85.1
8	84.0	82.8	83.3	86.4	87.1	88.7	90.6

**Figure 2**  
**WCPSS Mathematics Achievement Levels Over Time**  
**Percentage of Students at Levels III and IV**

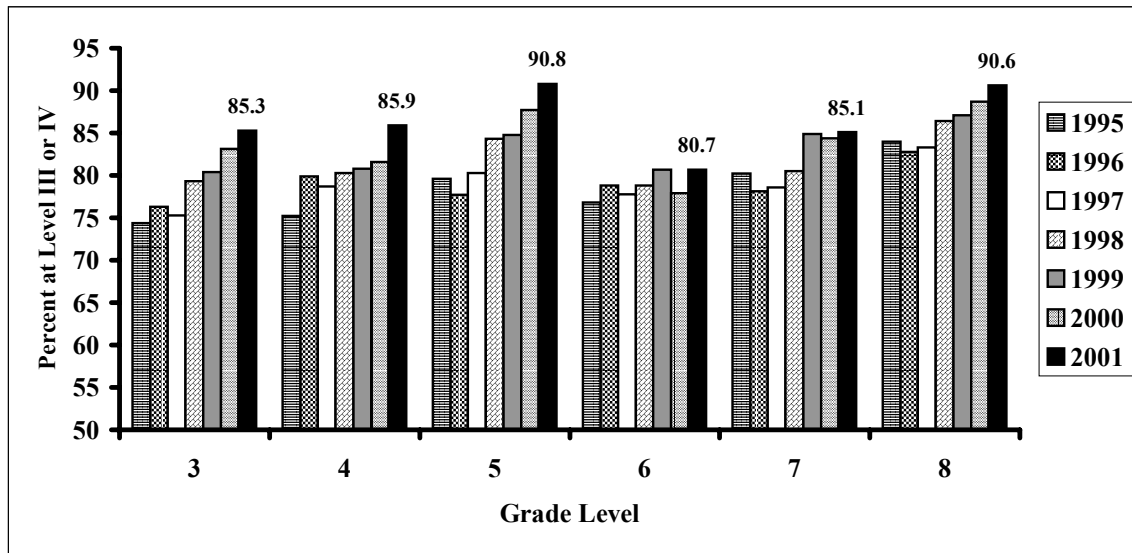
Grade	1995	1996	1997	1998	1999	2000	2001
3	73.5	76.9	76.8	75.4	77.1	80.0	84.0
4	78.0	79.6	83.3	84.1	88.1	89.2	92.7
5	77.2	78.3	80.2	84.0	87.0	88.9	92.1
6	80.1	80.7	79.7	82.7	84.8	85.3	88.1
7	81.0	80.2	81.0	83.7	87.3	86.8	87.6
8	83.2	80.6	79.0	83.2	83.8	85.7	86.9

Math achievement for the cohort of students that was in 3<sup>rd</sup> grade in 1996 and completed 8th grade in 2001 also shows the pattern of improvement over time. The percentage of students in that cohort who were in levels III and IV and therefore considered to be “at or above grade level” in math increased from 76.9% to 86.9%.

### Changes Within Grade Levels Over Time

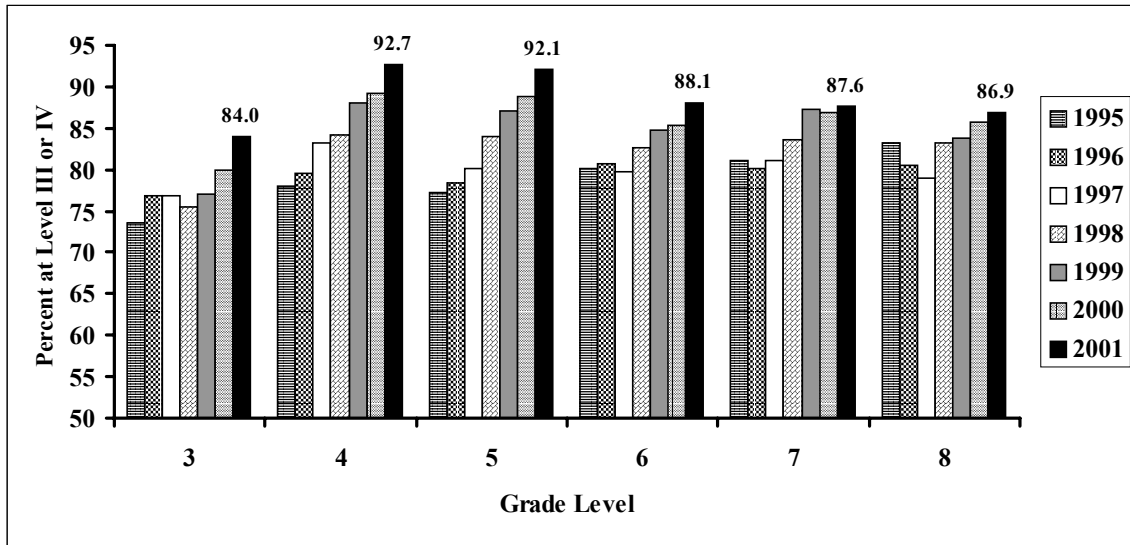
By comparing scores for a grade level to scores achieved in previous years, we see some indication of instructional changes over time, although it must be noted that different groups of students are in each grade level each year. The following graphs show changes within each grade level over the past seven years.

**Figure 3**  
**Percent of WCPSS Students in Levels III and IV in Reading**



As shown in Figure 3, grades 3, 4, 5, and 8 have shown steady improvement over the past five years, while gains in grade 6 and 7 have been less even. The percentage of students scoring at or above grade level in reading in grades 6 and 7 has not shown significant increases during the past three years.

**Figure 4**  
**Percent of WCPSS Students in Levels III and IV in Mathematics**



In mathematics, steady increases in the percentage of students on grade level can be seen in grades 3, 4, 5, 6, and 8. The percentage of students on grade level in grade seven for the past three years has not increased.

**Scale Scores**

The EOG scale score was developed by staff at the Thurstone Psychometric Laboratory at UNC-Chapel Hill. Scale scores cover the entire span from grade 3 through grade 10, and are designed to show growth over time. The scales were originally designed to begin near 100 and end near 200 with a mean of approximately 150 (anchored at the fifth grade). Mean (average) scale scores for cohorts are expected to increase as students move through grade levels and are an important way to track group changes from year to year. A new math scale was developed by NCDPI and used for reporting results on new math tests implemented in 2000-2001. The new scale range goes from approximately 211 to 310.

As shown in Figures 5 & 6, average reading scores in 2001 were the highest they have ever been at all grade levels. Because the range used for calculating math scores changed in 2001, comparisons to previous years are not valid.

**Figure 5**  
**WCPSS Reading Scale Score Means Over Time**

Grade	1995	1996	1997	1998	1999	2000	2001
3	146.7	147.0	146.9	148.2	148.7	149.6	150.2
4	150.8	151.7	151.6	152.4	152.3	152.9	154.1
5	155.4	155.0	155.9	157.2	157.1	158.4	159.0
6	157.3	158.4	158.6	158.5	159.4	158.9	159.8
7	161.1	160.8	161.0	161.7	162.4	162.4	162.7
8	163.2	162.9	163.6	164.4	164.7	165.0	165.8

**Figure 6**  
**WCPSS Math Scale Score Means Over Time**

<b>Grade</b>	<b>1995</b>	<b>1996</b>	<b>1997</b>	<b>1998</b>	<b>1999</b>	<b>2000</b>	<b>*2001</b>
<b>3</b>	<b>143.8</b>	<b>144.7</b>	<b>145.3</b>	<b>144.9</b>	<b>145.3</b>	<b>146.8</b>	<b>253.7</b>
<b>4</b>	<b>151.4</b>	<b>151.4</b>	<b>152.6</b>	<b>154.0</b>	<b>155.0</b>	<b>155.9</b>	<b>259.1</b>
<b>5</b>	<b>158.1</b>	<b>158.2</b>	<b>159.5</b>	<b>160.1</b>	<b>161.9</b>	<b>163.0</b>	<b>263.8</b>
<b>6</b>	<b>164.4</b>	<b>164.9</b>	<b>165.1</b>	<b>166.1</b>	<b>167.1</b>	<b>167.8</b>	<b>266.1</b>
<b>7</b>	<b>171.1</b>	<b>170.7</b>	<b>171.8</b>	<b>172.5</b>	<b>173.7</b>	<b>174.2</b>	<b>270.5</b>
<b>8</b>	<b>176.1</b>	<b>175.5</b>	<b>175.4</b>	<b>177.4</b>	<b>177.5</b>	<b>178.4</b>	<b>273.7</b>

\* Note: Math scale score ranges were recalculated by NCDPI in 2001. Comparisons to previous years are not valid.

### Disaggregated Results

WCPSS disaggregates results for different groups of students. The most common groupings are race and gender, and the following tables (Figures 7-12) show three years of results for the major demographic student groups. Disaggregated test results by school are included in the annual volume of *School Profiles*.

**Figure 7**

<b>2001 End-of-Grade Reading Results For WCPSS (Percentage Of Students Who Scored At Level III And Level IV)</b>						
<b>Category</b>	<b>Gd. 3</b>	<b>Gd. 4</b>	<b>Gd. 5</b>	<b>Gd. 6</b>	<b>Gd. 7</b>	<b>Gd. 8</b>
<b>Total System</b>	<b>85.3</b>	<b>85.9</b>	<b>90.8</b>	<b>80.7</b>	<b>85.1</b>	<b>90.6</b>
<b>Not F/R</b>	<b>91.8</b>	<b>92.4</b>	<b>95.1</b>	<b>88.6</b>	<b>91.0</b>	<b>95.0</b>
<b>F/R Lunch</b>	<b>64.7</b>	<b>62.9</b>	<b>73.9</b>	<b>51.4</b>	<b>58.5</b>	<b>68.6</b>
<b>Male</b>	<b>83.5</b>	<b>84.5</b>	<b>89.8</b>	<b>78.7</b>	<b>83.7</b>	<b>88.9</b>
<b>Female</b>	<b>87.1</b>	<b>87.3</b>	<b>91.8</b>	<b>82.8</b>	<b>86.5</b>	<b>92.3</b>
<b>White</b>	<b>93.8</b>	<b>94.7</b>	<b>96.7</b>	<b>91.3</b>	<b>93.9</b>	<b>96.4</b>
<b>Black</b>	<b>65.9</b>	<b>65.3</b>	<b>76.9</b>	<b>56.7</b>	<b>64.2</b>	<b>76.1</b>
<b>Asian</b>	<b>94.5</b>	<b>94.2</b>	<b>95.6</b>	<b>94.2</b>	<b>91.6</b>	<b>94.7</b>
<b>Hispanic</b>	<b>74.5</b>	<b>71.7</b>	<b>76.2</b>	<b>59.1</b>	<b>68.8</b>	<b>79.9</b>
<b>Multiracial</b>	<b>85.6</b>	<b>88.1</b>	<b>93.3</b>	<b>85.7</b>	<b>86.7</b>	<b>94.4</b>

Figure 8

<b>2000 End-of-Grade Reading Results For WCPSS (Percentage Of Students Who Scored At Level III And Level IV)</b>						
<b>Category</b>	<b>Gd. 3</b>	<b>Gd. 4</b>	<b>Gd. 5</b>	<b>Gd. 6</b>	<b>Gd. 7</b>	<b>Gd. 8</b>
<b>All Students</b>	<b>83.1</b>	<b>81.6</b>	<b>87.7</b>	<b>77.9</b>	<b>84.4</b>	<b>88.7</b>
<b>Not F/R</b>	<b>90.9</b>	<b>89.2</b>	<b>93.8</b>	<b>85.7</b>	<b>91.0</b>	<b>93.2</b>
<b>F/R Lunch</b>	<b>57.5</b>	<b>54.7</b>	<b>65.0</b>	<b>46.8</b>	<b>57.0</b>	<b>66.6</b>
<b>Male</b>	<b>80.7</b>	<b>79.0</b>	<b>86.1</b>	<b>74.7</b>	<b>81.9</b>	<b>86.4</b>
<b>Female</b>	<b>85.7</b>	<b>84.5</b>	<b>89.4</b>	<b>81.2</b>	<b>87.0</b>	<b>91.3</b>
<b>White</b>	<b>92.6</b>	<b>91.1</b>	<b>95.0</b>	<b>88.6</b>	<b>93.5</b>	<b>95.1</b>
<b>Black</b>	<b>60.4</b>	<b>57.5</b>	<b>68.8</b>	<b>52.8</b>	<b>61.8</b>	<b>73.2</b>
<b>Asian</b>	<b>93.0</b>	<b>92.8</b>	<b>95.3</b>	<b>84.5</b>	<b>92.9</b>	<b>92.9</b>
<b>Hispanic</b>	<b>65.4</b>	<b>68.2</b>	<b>73.4</b>	<b>56.9</b>	<b>70.6</b>	<b>66.7</b>
<b>Multiracial</b>	<b>84.3</b>	<b>81.2</b>	<b>91.8</b>	<b>78.2</b>	<b>87.7</b>	<b>85.9</b>

Figure 9

<b>1999 End-of-Grade Reading Results For WCPSS (Percentage Of Students Who Scored At Level III And Level IV)</b>						
<b>Category</b>	<b>Gd. 3</b>	<b>Gd. 4</b>	<b>Gd. 5</b>	<b>Gd. 6</b>	<b>Gd. 7</b>	<b>Gd. 8</b>
<b>All Students</b>	<b>80.4</b>	<b>80.8</b>	<b>84.8</b>	<b>80.7</b>	<b>84.9</b>	<b>87.1</b>
<b>Not F/R</b>	<b>88.6</b>	<b>88.7</b>	<b>91.3</b>	<b>88.8</b>	<b>90.8</b>	<b>92.2</b>
<b>F/R Lunch</b>	<b>53.8</b>	<b>53.3</b>	<b>60.1</b>	<b>51.6</b>	<b>60.1</b>	<b>61.5</b>
<b>Male</b>	<b>78.2</b>	<b>79.0</b>	<b>83.6</b>	<b>78.7</b>	<b>83.0</b>	<b>85.4</b>
<b>Female</b>	<b>82.8</b>	<b>82.8</b>	<b>86.2</b>	<b>83.0</b>	<b>87.0</b>	<b>88.9</b>
<b>White</b>	<b>89.5</b>	<b>89.8</b>	<b>93.0</b>	<b>90.4</b>	<b>93.1</b>	<b>94.5</b>
<b>Black</b>	<b>57.7</b>	<b>56.5</b>	<b>63.8</b>	<b>57.1</b>	<b>64.5</b>	<b>66.3</b>
<b>Asian</b>	<b>89.5</b>	<b>89.6</b>	<b>93.1</b>	<b>93.3</b>	<b>89.4</b>	<b>92.2</b>
<b>Hispanic</b>	<b>62.9</b>	<b>65.9</b>	<b>70.1</b>	<b>67.5</b>	<b>65.3</b>	<b>75.4</b>
<b>Multiracial</b>	<b>84.5</b>	<b>90.0</b>	<b>75.7</b>	<b>87.3</b>	<b>81.6</b>	<b>82.9</b>

Figure 10

<b>2001 End-Of-Grade Mathematics Results For WCPSS (Percentage Of Students Who Scored At Level III And Level IV)</b>						
<b>Category</b>	<b>Gd. 3</b>	<b>Gd. 4</b>	<b>Gd. 5</b>	<b>Gd. 6</b>	<b>Gd. 7</b>	<b>Gd. 8</b>
<b>Total System</b>	<b>84.0</b>	<b>92.7</b>	<b>92.1</b>	<b>88.1</b>	<b>87.6</b>	<b>86.9</b>
<b>Not F/R</b>	<b>91.0</b>	<b>96.5</b>	<b>95.7</b>	<b>93.9</b>	<b>92.5</b>	<b>91.7</b>
<b>F/R Lunch</b>	<b>61.9</b>	<b>79.2</b>	<b>77.7</b>	<b>66.6</b>	<b>65.7</b>	<b>63.1</b>
<b>Male</b>	<b>83.5</b>	<b>92.6</b>	<b>91.2</b>	<b>87.8</b>	<b>87.0</b>	<b>85.9</b>
<b>Female</b>	<b>84.5</b>	<b>92.7</b>	<b>92.9</b>	<b>88.5</b>	<b>88.3</b>	<b>87.9</b>
<b>White</b>	<b>94.4</b>	<b>98.0</b>	<b>97.4</b>	<b>95.8</b>	<b>95.2</b>	<b>94.3</b>
<b>Black</b>	<b>60.0</b>	<b>79.1</b>	<b>78.4</b>	<b>70.8</b>	<b>69.5</b>	<b>67.8</b>
<b>Asian</b>	<b>93.9</b>	<b>99.0</b>	<b>98.0</b>	<b>96.9</b>	<b>95.1</b>	<b>95.5</b>
<b>Hispanic</b>	<b>75.3</b>	<b>87.4</b>	<b>85.6</b>	<b>74.5</b>	<b>73.2</b>	<b>77.1</b>
<b>Multiracial</b>	<b>81.3</b>	<b>93.2</b>	<b>94.8</b>	<b>88.4</b>	<b>87.8</b>	<b>86.1</b>

Figure 11

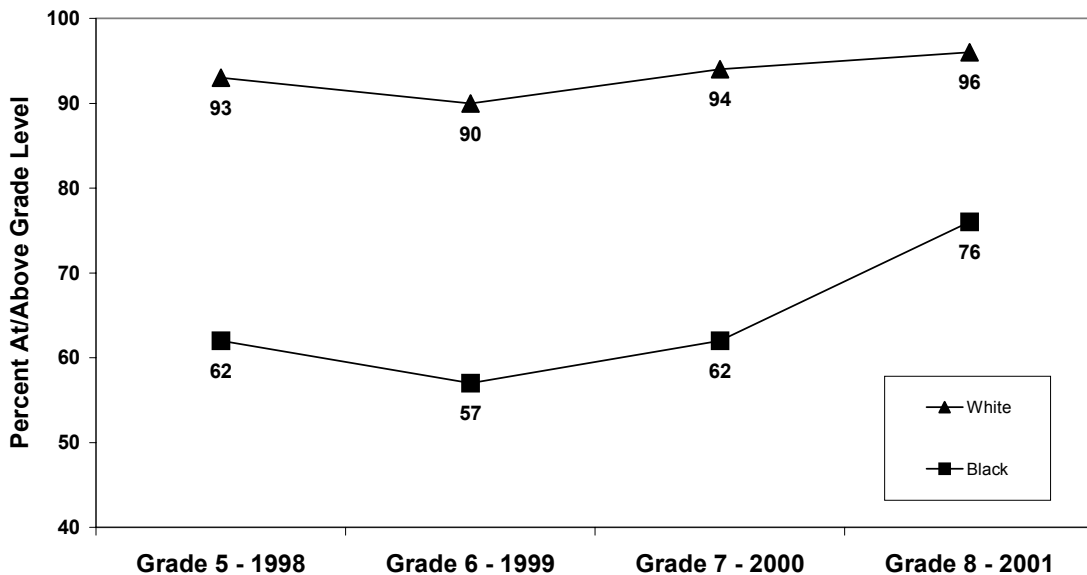
<b>2000 End-Of-Grade Mathematics Results For WCPSS (Percentage Of Students Who Scored At Level III And Level IV)</b>						
<b>Category</b>	<b>Gd. 3</b>	<b>Gd. 4</b>	<b>Gd. 5</b>	<b>Gd. 6</b>	<b>Gd. 7</b>	<b>Gd. 8</b>
<b>Total System</b>	<b>80.0</b>	<b>89.2</b>	<b>88.9</b>	<b>85.4</b>	<b>86.8</b>	<b>85.8</b>
<b>Not F/R</b>	<b>88.4</b>	<b>94.6</b>	<b>94.0</b>	<b>91.6</b>	<b>92.8</b>	<b>90.6</b>
<b>F/R Lunch</b>	<b>52.1</b>	<b>70.3</b>	<b>69.9</b>	<b>60.6</b>	<b>61.8</b>	<b>61.8</b>
<b>Male</b>	<b>79.8</b>	<b>88.9</b>	<b>88.2</b>	<b>83.7</b>	<b>86.1</b>	<b>84.2</b>
<b>Female</b>	<b>80.2</b>	<b>89.6</b>	<b>89.6</b>	<b>87.1</b>	<b>87.6</b>	<b>87.4</b>
<b>White</b>	<b>91.4</b>	<b>95.7</b>	<b>95.4</b>	<b>93.7</b>	<b>94.8</b>	<b>93.6</b>
<b>Black</b>	<b>51.8</b>	<b>72.2</b>	<b>71.8</b>	<b>65.0</b>	<b>66.8</b>	<b>65.5</b>
<b>Asian</b>	<b>94.8</b>	<b>97.1</b>	<b>96.9</b>	<b>95.6</b>	<b>96.0</b>	<b>93.8</b>
<b>Hispanic</b>	<b>65.9</b>	<b>83.7</b>	<b>78.5</b>	<b>70.7</b>	<b>74.4</b>	<b>65.5</b>
<b>Multiracial</b>	<b>75.2</b>	<b>87.6</b>	<b>88.2</b>	<b>85.2</b>	<b>93.8</b>	<b>79.7</b>

Figure 12

1999 End-Of-Grade Mathematics Results For WCPSS (Percentage Of Students Who Scored At Level III And Level IV)						
Category	Gd. 3	Gd. 4	Gd. 5	Gd. 6	Gd. 7	Gd. 8
Total System	77.1	88.1	87.0	84.8	87.4	83.9
Not F/R	86.3	94.1	92.9	91.8	92.6	89.6
F/R Lunch	47.5	67.2	64.3	59.4	64.7	54.8
Male	76.6	88.4	86.7	83.8	86.5	83.2
Female	77.7	87.9	87.2	85.9	88.2	84.6
White	87.7	95.3	94.6	93.5	94.4	93.1
Black	49.7	68.8	66.8	63.6	68.6	57.2
Asian	94.0	95.6	95.7	95.4	95.6	95.0
Hispanic	63.1	78.8	75.9	73.2	74.4	70.4
Multiracial	74.4	90.0	82.1	88.9	87.8	82.5

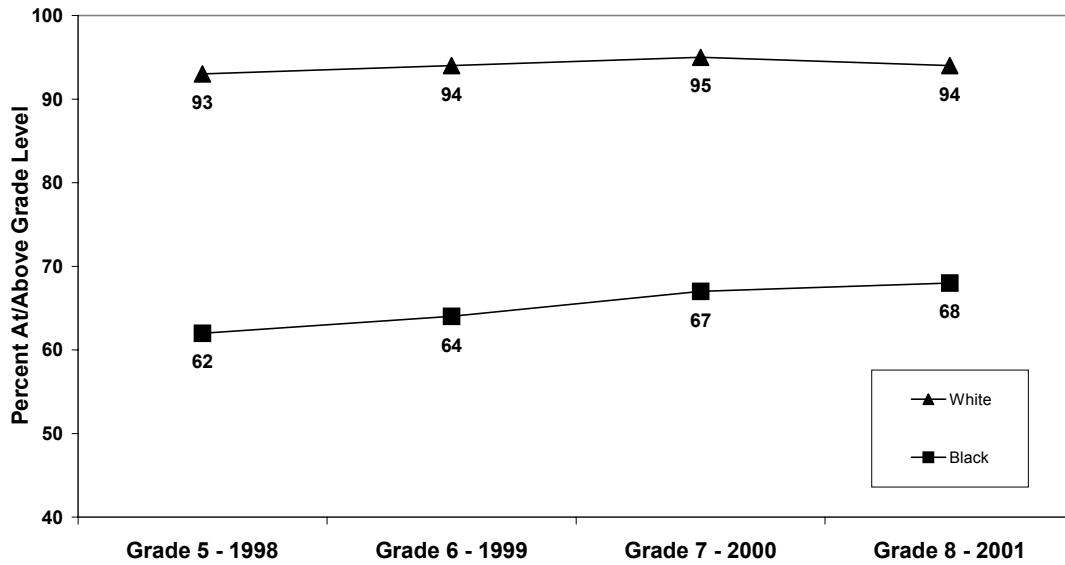
As shown in the preceding tables and illustrated below, significant gaps persist over time when achievement is disaggregated by race and gender, although the gap sometimes narrows as cohorts progress through the system. Figures 13 and 14 show reading and math performance for Black and White students across four years and the gap appears to have narrowed more in 2001 than in previous years.

Figure 13  
Reading Percent At/Above Grade Level by Race  
The 2000-2001 8th-grade Cohort over Time



Progress in closing the achievement gap was less dramatic in mathematics, as shown in Figure 14.

**Figure 14**  
**Math Percent At/Above Grade Level by Race**  
**The 2000-2001 8th-grade Cohort over Time**



Attached tables show the percentage of students scoring at or above grade level (Levels III and IV) in reading and math for each school, followed by pages showing average reading and math scale scores for each school.

## Percent of Students In Levels III and IV on EOG Tests for Three Years

		Reading			Mathematics		
		1999	2000	2001	1999	2000	2001
304	<b>3rd Gd:</b>	86.3	87.8	89.9	78.7	88.8	89.9
<b>Adams Elementary</b>	<b>4th Gd:</b>	86.7	89.5	93.1	90.8	93.4	96.0
	<b>5th Gd:</b>	90.1	94.5	93.2	89.2	95.9	94.5
308	<b>3rd Gd:</b>	89.7	88.5	91.5	84.8	87.9	93.9
<b>Apex Elementary</b>	<b>4th Gd:</b>	88.5	92.8	93.9	94.3	95.3	96.9
	<b>5th Gd:</b>	94.1	88.8	97.8	95.9	92.0	96.8
320	<b>3rd Gd:</b>	79.5	79.5	78.9	74.7	72.2	70.4
<b>Aversboro Elementary</b>	<b>4th Gd:</b>	84.0	60.5	66.7	88.2	79.5	87.7
	<b>5th Gd:</b>	73.5	83.1	74.4	78.3	70.5	78.2
326	<b>3rd Gd:</b>	85.6	90.4	89.0	75.3	84.6	89.0
<b>Baileywick Elementary</b>	<b>4th Gd:</b>	80.2	84.6	84.2	90.1	89.4	93.7
	<b>5th Gd:</b>	81.3	94.7	93.9	82.3	91.5	92.9
328	<b>3rd Gd:</b>	91.9	95.9	94.1	87.6	90.7	90.4
<b>Baucom Elementary</b>	<b>4th Gd:</b>	90.1	90.9	92.6	94.3	95.7	95.9
	<b>5th Gd:</b>	93.1	92.5	98.6	91.7	95.9	99.3
334	<b>3rd Gd:</b>	80.8	88.3	93.8	77.7	90.3	98.4
<b>Brassfield Elementary</b>	<b>4th Gd:</b>	87.4	87.2	94.7	87.4	96.8	96.1
	<b>5th Gd:</b>	89.4	90.1	98.7	92.7	91.4	98.7
336	<b>3rd Gd:</b>	64.3	73.9	70.6	63.5	70.2	63.5
<b>Brentwood Elementary</b>	<b>4th Gd:</b>	80.3	62.8	70.7	83.8	93.0	77.3
	<b>5th Gd:</b>	76.3	77.5	79.5	85.7	91.5	96.4
340	<b>3rd Gd:</b>	78.7	91.0	91.3	80.9	91.0	85.9
<b>Briarcliff Elementary</b>	<b>4th Gd:</b>	83.8	78.9	91.2	83.8	84.4	94.5
	<b>5th Gd:</b>	85.5	89.8	96.3	84.6	90.8	95.1
344	<b>3rd Gd:</b>	72.4	65.4	77.3	69.7	69.2	69.7
<b>Brooks Elementary</b>	<b>4th Gd:</b>	71.9	62.1	76.8	76.4	68.2	88.4
	<b>5th Gd:</b>	88.0	77.5	91.2	86.7	79.8	91.2
352	<b>3rd Gd:</b>	83.3	85.5	89.9	83.3	80.3	82.6
<b>Bugg Elementary</b>	<b>4th Gd:</b>	79.0	82.5	89.7	85.2	83.8	98.5
	<b>5th Gd:</b>	79.4	82.1	89.0	65.1	78.6	85.4
362	<b>3rd Gd:</b>	62.0	75.5	80.9	62.0	72.8	75.9
<b>Carver Elementary</b>	<b>4th Gd:</b>	65.9	64.6	78.6	71.8	83.9	96.6
	<b>5th Gd:</b>	65.6	77.0	82.4	78.7	80.0	92.6
364	<b>3rd Gd:</b>	80.8	71.5	76.5	78.3	65.9	75.9
<b>Cary Elementary</b>	<b>4th Gd:</b>	65.0	75.7	73.3	79.6	81.8	82.6
	<b>5th Gd:</b>	80.9	79.5	84.5	84.3	87.6	90.6
376	<b>3rd Gd:</b>	88.5	83.3	89.2	86.2	86.3	89.2
<b>Combs Elementary</b>	<b>4th Gd:</b>	76.0	98.6	93.3	93.3	100.0	100.0
	<b>5th Gd:</b>	87.9	90.4	96.3	100.0	91.8	95.0

## Percent of Students In Levels III and IV on EOG Tests for Three Years

		Reading			Mathematics		
		1999	2000	2001	1999	2000	2001
380	<b>3rd Gd:</b>	74.1	58.5	73.5	72.9	58.5	72.3
<b>Conn Elementary</b>	<b>4th Gd:</b>	78.9	78.9	64.6	85.7	78.9	84.8
	<b>5th Gd:</b>	73.5	78.3	85.9	77.1	85.5	90.2
384	<b>3rd Gd:</b>	68.0	51.1	84.2	57.3	41.5	75.0
<b>Creech Road Elementary</b>	<b>4th Gd:</b>	65.1	57.3	82.2	80.0	77.6	90.5
	<b>5th Gd:</b>	74.0	71.7	85.2	81.3	75.0	76.5
390	<b>3rd Gd:</b>	94.2	98.3	96.5	94.8	97.1	97.0
<b>Davis Drive Elementary</b>	<b>4th Gd:</b>	96.0	97.6	97.7	99.4	98.8	100.0
	<b>5th Gd:</b>	95.9	98.2	98.8	97.7	100.0	98.8
393	<b>3rd Gd:</b>		81.8	88.1		76.9	89.0
<b>Dillard Dr. Elementary</b>	<b>4th Gd:</b>		84.1	88.7		92.1	94.9
	<b>5th Gd:</b>		87.6	89.1		87.6	90.1
396	<b>3rd Gd:</b>	79.4	77.0	79.4	69.6	55.4	76.2
<b>Douglas Elementary</b>	<b>4th Gd:</b>	83.8	86.2	86.7	80.9	91.2	88.0
	<b>5th Gd:</b>	81.0	86.2	88.7	75.9	83.3	87.3
398	<b>3rd Gd:</b>	86.4	88.6	93.1	87.0	83.7	96.9
<b>Durant Road Elementary</b>	<b>4th Gd:</b>	91.2	94.0	92.2	96.5	98.2	95.2
	<b>5th Gd:</b>	90.8	97.6	97.6	98.3	96.5	98.8
414	<b>3rd Gd:</b>	74.3	78.8	84.4	73.7	72.0	85.6
<b>Farmington Woods Elementa</b>	<b>4th Gd:</b>	78.0	79.7	85.4	83.7	85.8	92.3
	<b>5th Gd:</b>	82.5	83.3	88.5	87.2	79.0	91.2
415	<b>3rd Gd:</b>	78.9	82.7	89.7	76.2	70.3	79.5
<b>Fox Road Elementary</b>	<b>4th Gd:</b>	75.4	82.4	86.2	85.2	84.9	94.3
	<b>5th Gd:</b>	87.8	88.6	91.9	93.2	85.9	91.1
416	<b>3rd Gd:</b>	72.5	79.7	82.4	67.9	72.5	76.5
<b>Fuller Elementary</b>	<b>4th Gd:</b>	74.7	73.5	88.4	81.3	77.4	87.0
	<b>5th Gd:</b>	75.3	75.0	85.1	67.4	73.8	73.8
420	<b>3rd Gd:</b>	64.9	74.8	78.7	56.5	73.3	83.7
<b>Fuquay-Varina Elementary</b>	<b>4th Gd:</b>	70.1	63.5	83.9	81.0	75.9	94.7
	<b>5th Gd:</b>	82.0	77.9	83.7	83.2	85.0	85.1
439	<b>3rd Gd:</b>			94.3			97.1
<b>Green Hope Elementary</b>	<b>4th Gd:</b>			99.0			99.0
	<b>5th Gd:</b>			98.3			100.0
440	<b>3rd Gd:</b>	87.9	91.4	90.0	83.0	87.6	94.2
<b>Green Elementary</b>	<b>4th Gd:</b>	84.7	83.6	91.6	94.6	93.8	96.2
	<b>5th Gd:</b>	82.8	91.5	90.1	88.2	93.1	95.4
442	<b>3rd Gd:</b>	84.3	88.4	90.9	82.0	82.6	90.9
<b>Hilburn Drive Elementary</b>	<b>4th Gd:</b>		76.7	84.6		84.4	90.6
	<b>5th Gd:</b>		88.8	92.0		88.8	94.3

**Percent of Students In Levels III and IV on EOG Tests for Three Years**

		Reading			Mathematics		
		1999	2000	2001	1999	2000	2001
446	<b>3rd Gd:</b>	64.1	66.7	77.2	64.8	62.2	72.0
<b>Hodge Road Elementary</b>	<b>4th Gd:</b>	68.2	66.0	75.7	88.3	82.0	85.2
	<b>5th Gd:</b>	69.2	77.8	85.6	70.1	77.1	84.0
	<hr/>						
447	<b>3rd Gd:</b>	81.1	76.2	82.8	77.9	78.5	83.0
<b>Holly Springs Elementary</b>	<b>4th Gd:</b>	73.9	83.3	85.4	86.3	92.4	93.5
	<b>5th Gd:</b>	76.7	85.0	90.2	85.4	94.0	92.2
	<hr/>						
448	<b>3rd Gd:</b>	79.4	89.3	82.9	76.2	85.1	85.6
<b>Hunter Elementary</b>	<b>4th Gd:</b>	90.5	82.1	81.6	88.8	85.4	90.3
	<b>5th Gd:</b>	82.8	92.4	93.3	80.5	91.6	90.8
	<hr/>						
452	<b>3rd Gd:</b>	80.2	86.5	83.7	73.6	85.6	80.6
<b>Jeffreys Grove Elementary</b>	<b>4th Gd:</b>	80.4	85.7	88.5	85.3	90.1	96.2
	<b>5th Gd:</b>	84.5	85.4	87.9	77.3	84.5	90.1
	<hr/>						
454	<b>3rd Gd:</b>	82.8	90.3	88.7	85.2	89.7	87.9
<b>Jones Dairy Elementary</b>	<b>4th Gd:</b>	89.3	85.1	92.3	97.3	92.6	94.9
	<b>5th Gd:</b>	86.3	94.3	91.0	88.8	95.3	95.9
	<hr/>						
456	<b>3rd Gd:</b>	78.5	78.7	82.6	76.3	73.7	78.2
<b>Joyner Elementary</b>	<b>4th Gd:</b>	76.0	74.5	82.4	90.0	83.3	85.1
	<b>5th Gd:</b>	92.9	89.1	86.4	89.5	87.3	87.5
	<hr/>						
460	<b>3rd Gd:</b>	89.2	96.4	93.2	93.2	100.0	95.5
<b>Kingswood Elementary</b>	<b>4th Gd:</b>	88.6	92.4	92.6	97.1	98.5	100.0
	<b>5th Gd:</b>	94.7	98.5	98.1	98.2	100.0	100.0
	<hr/>						
464	<b>3rd Gd:</b>	76.7	63.4	79.1	61.2	57.1	70.4
<b>Knightdale Elementary</b>	<b>4th Gd:</b>	60.6	78.6	73.0	77.8	79.7	86.5
	<b>5th Gd:</b>	72.9	73.7	87.4	76.9	65.7	88.2
	<hr/>						
468	<b>3rd Gd:</b>	80.4	80.6	79.1	76.7	72.5	91.9
<b>Lacy Elementary</b>	<b>4th Gd:</b>	77.8	85.7	81.1	86.9	87.9	88.4
	<b>5th Gd:</b>	88.3	87.1	94.0	90.2	85.1	98.8
	<hr/>						
469	<b>3rd Gd:</b>		77.6	94.7		77.6	91.5
<b>Leesville Road Elementary</b>	<b>4th Gd:</b>	82.0	90.7	92.5	88.8	97.3	97.0
	<b>5th Gd:</b>	87.2	91.5	99.0	89.6	91.5	96.9
	<hr/>						
470	<b>3rd Gd:</b>	83.1	89.2	83.8	77.7	87.8	82.1
<b>Lead Mine Elementary</b>	<b>4th Gd:</b>	83.5	84.3	86.4	87.0	89.8	90.0
	<b>5th Gd:</b>	85.7	89.1	91.4	83.9	91.4	95.1
	<hr/>						
476	<b>3rd Gd:</b>	70.5	72.9	80.3	57.5	75.9	82.7
<b>Lincoln Heights Elementary</b>	<b>4th Gd:</b>	76.6	69.0	92.9	75.6	74.5	93.0
	<b>5th Gd:</b>	85.9	81.7	85.1	89.2	75.3	88.8
	<hr/>						
480	<b>3rd Gd:</b>	65.1	75.5	87.6	60.6	77.8	81.7
<b>Lockhart Elementary</b>	<b>4th Gd:</b>	68.4	79.8	89.6	68.4	89.4	97.0
	<b>5th Gd:</b>	80.4	86.9	95.3	76.5	83.5	89.7
	<hr/>						

## Percent of Students In Levels III and IV on EOG Tests for Three Years

		Reading			Mathematics		
		1999	2000	2001	1999	2000	2001
488	<b>3rd Gd:</b>	79.6	76.3	84.8	78.5	75.8	73.9
<b>Lynn Road Elementary</b>	<b>4th Gd:</b>	79.8	78.4	84.9	88.5	89.7	90.9
	<b>5th Gd:</b>	83.5	79.8	84.8	82.8	78.0	88.2
	<hr/>						
494	<b>3rd Gd:</b>			79.5			72.6
<b>Middle Creek Elementary</b>	<b>4th Gd:</b>			78.1			89.0
	<b>5th Gd:</b>			82.8			89.1
	<hr/>						
496	<b>3rd Gd:</b>	76.0	73.5	81.8	74.7	68.7	71.3
<b>Millbrook Elementary</b>	<b>4th Gd:</b>	80.0	79.7	74.7	85.7	87.0	81.3
	<b>5th Gd:</b>	81.8	81.7	91.4	82.3	89.2	88.9
	<hr/>						
504	<b>3rd Gd:</b>	98.2	97.5	96.8	99.4	95.6	96.1
<b>Morrisville Elementary</b>	<b>4th Gd:</b>	93.6	95.7	96.1	97.1	97.6	98.7
	<b>5th Gd:</b>	96.3	97.9	99.4	96.3	96.5	100.0
	<hr/>						
516	<b>3rd Gd:</b>	80.2	92.3	91.5	77.9	87.9	91.5
<b>North Ridge Elementary</b>	<b>4th Gd:</b>	83.1	83.3	94.1	94.0	92.3	96.4
	<b>5th Gd:</b>	84.0	93.2	95.7	88.7	92.1	93.6
	<hr/>						
520	<b>3rd Gd:</b>	91.1	84.9	91.9	87.0	83.8	92.8
<b>Northwoods Elementary</b>	<b>4th Gd:</b>	82.7	89.9	92.9	87.2	94.4	92.9
	<b>5th Gd:</b>	84.9	86.6	93.6	85.7	89.8	93.6
	<hr/>						
522	<b>3rd Gd:</b>	96.5	96.5	95.1	94.7	95.9	96.3
<b>Oak Grove Elementary</b>	<b>4th Gd:</b>	95.0	92.9	94.6	98.2	95.2	98.2
	<b>5th Gd:</b>	95.7	97.5	96.9	98.8	98.5	97.6
	<hr/>						
523	<b>3rd Gd:</b>	84.7	95.2	90.7	91.0	91.0	93.5
<b>Olive Chapel Elementary</b>	<b>4th Gd:</b>	87.4	85.0	96.9	93.3	93.2	97.7
	<b>5th Gd:</b>	88.6	91.4	91.9	90.4	91.4	94.6
	<hr/>						
524	<b>3rd Gd:</b>	80.4	85.1	81.8	73.9	93.6	78.8
<b>Olds @ Cardinal Gibbons</b>	<b>4th Gd:</b>	85.7	75.0	84.0	98.2	92.5	96.0
	<b>5th Gd:</b>	87.7	92.2	82.9	91.2	96.1	95.1
	<hr/>						
525	<b>3rd Gd:</b>		91.4	90.0		91.4	90.0
<b>Partnership Elementary</b>	<b>4th Gd:</b>			83.3			94.4
	<b>5th Gd:</b>						
	<hr/>						
530	<b>3rd Gd:</b>	79.3	82.2	89.1	77.5	82.2	83.7
<b>Penny Road Elementary</b>	<b>4th Gd:</b>	76.5	83.7	77.8	83.2	91.3	91.9
	<b>5th Gd:</b>	89.4	88.3	97.7	89.4	89.2	96.6
	<hr/>						
531	<b>3rd Gd:</b>	89.0	83.9	91.3	93.6	79.8	95.2
<b>Pleasant Union Elementary</b>	<b>4th Gd:</b>	95.7	90.1	91.1	97.9	95.0	95.5
	<b>5th Gd:</b>	93.4	96.4	95.2	96.7	93.7	94.4
	<hr/>						
532	<b>3rd Gd:</b>	73.6	86.3	83.3	64.2	75.5	80.3
<b>Poe Elementary</b>	<b>4th Gd:</b>	100.0	71.7	78.7	100.0	82.6	80.9
	<b>5th Gd:</b>		100.0	92.1		100.0	94.7
	<hr/>						

**Percent of Students In Levels III and IV on EOG Tests for Three Years**

		Reading			Mathematics		
		1999	2000	2001	1999	2000	2001
536	<b>3rd Gd:</b>	76.0	70.3	71.1	73.0	58.7	62.9
<b>Powell Elementary</b>	<b>4th Gd:</b>	89.4	91.4	67.4	92.9	93.0	81.1
	<b>5th Gd:</b>	89.4	87.1	95.9	92.6	95.7	97.3
	<hr/>						
540	<b>3rd Gd:</b>	71.7	73.6	72.6	72.1	72.1	65.3
<b>Rand Road Elementary</b>	<b>4th Gd:</b>	70.2	68.9	74.0	79.8	75.0	83.7
	<b>5th Gd:</b>	74.2	70.7	82.8	80.8	74.4	83.9
	<hr/>						
542	<b>3rd Gd:</b>		88.7	85.5		81.1	80.3
<b>Reedy Creek Elem.</b>	<b>4th Gd:</b>		85.2	86.9		95.4	90.9
	<b>5th Gd:</b>		91.8	96.3		89.8	93.5
	<hr/>						
544	<b>3rd Gd:</b>	70.5	77.7	68.4	61.0	68.0	69.6
<b>Rolesville Elementary</b>	<b>4th Gd:</b>	68.3	73.8	81.4	82.5	85.9	93.0
	<b>5th Gd:</b>	76.0	83.3	85.0	76.0	84.4	83.9
	<hr/>						
548	<b>3rd Gd:</b>	76.7	80.5	84.6	75.6	81.6	81.8
<b>Root Elementary</b>	<b>4th Gd:</b>	91.4	88.1	86.4	92.9	92.9	95.0
	<b>5th Gd:</b>	85.7	93.8	88.2	83.3	96.8	89.7
	<hr/>						
550	<b>3rd Gd:</b>			93.1			93.1
<b>Salem Elementary</b>	<b>4th Gd:</b>			91.7			92.9
	<b>5th Gd:</b>			88.2			93.4
	<hr/>						
560	<b>3rd Gd:</b>	81.6	71.4	74.8	75.3	64.8	76.0
<b>Smith Elementary</b>	<b>4th Gd:</b>	76.2	68.9	83.1	76.7	84.6	94.0
	<b>5th Gd:</b>	83.7	82.7	86.4	84.1	84.6	78.7
	<hr/>						
564	<b>3rd Gd:</b>	85.4	89.7	91.8	86.6	88.5	87.8
<b>Stough Elementary</b>	<b>4th Gd:</b>	83.7	83.3	93.4	92.4	89.7	93.4
	<b>5th Gd:</b>	87.0	94.9	89.5	89.6	94.9	90.7
	<hr/>						
568	<b>3rd Gd:</b>	72.3	88.2	76.3	69.3	75.8	71.1
<b>Swift Creek Elementary</b>	<b>4th Gd:</b>	76.0	83.5	71.0	83.1	85.4	77.0
	<b>5th Gd:</b>	85.2	87.7	82.1	81.7	91.1	79.4
	<hr/>						
570	<b>3rd Gd:</b>	91.3	91.9	91.9	87.8	90.5	95.5
<b>Timber Drive Elementary</b>	<b>4th Gd:</b>	87.3	85.2	90.7	91.8	97.2	97.8
	<b>5th Gd:</b>	94.8	90.6	92.5	96.9	92.5	96.3
	<hr/>						
572	<b>3rd Gd:</b>	69.0	64.3	70.0	62.0	53.6	70.0
<b>Underwood Elementary</b>	<b>4th Gd:</b>	73.2	73.0	67.3	79.3	83.9	76.9
	<b>5th Gd:</b>	79.5	86.1	83.0	83.6	83.1	88.5
	<hr/>						
576	<b>3rd Gd:</b>	79.3	79.2	82.1	70.8	84.7	87.6
<b>Vance Elementary</b>	<b>4th Gd:</b>	71.6	72.6	76.3	91.4	83.7	90.0
	<b>5th Gd:</b>	72.9	84.0	82.1	82.4	93.3	88.1
	<hr/>						
580	<b>3rd Gd:</b>	72.1	88.5	86.4	65.1	88.5	85.2
<b>Vandora Springs Elem.</b>	<b>4th Gd:</b>	71.0	81.7	94.7	77.4	94.0	100.0
	<b>5th Gd:</b>	73.1	82.0	92.6	80.6	85.5	93.6
	<hr/>						

**Percent of Students In Levels III and IV on EOG Tests for Three Years**

		Reading			Mathematics		
		1999	2000	2001	1999	2000	2001
584	<b>3rd Gd:</b>	76.2	81.4	89.6	65.9	72.9	79.9
<b>Wake Forest Elementary</b>	<b>4th Gd:</b>	76.4	74.5	82.5	82.6	87.3	92.0
	<b>5th Gd:</b>	78.0	86.7	88.4	80.5	83.2	87.1
	<hr/>						
593	<b>3rd Gd:</b>		89.1	84.9		80.0	86.1
<b>Wakefield Elem.</b>	<b>4th Gd:</b>		84.3	88.1		92.2	94.1
	<b>5th Gd:</b>			90.6			92.9
	<hr/>						
596	<b>3rd Gd:</b>	78.0	83.0	86.5	68.1	72.3	86.5
<b>Washington Elementary</b>	<b>4th Gd:</b>	77.9	84.0	83.0	85.6	87.7	95.7
	<b>5th Gd:</b>	86.6	84.8	89.8	85.6	86.7	91.7
	<hr/>						
598	<b>3rd Gd:</b>	84.1	91.7	86.7	82.7	90.7	94.6
<b>Weatherstone Elem.</b>	<b>4th Gd:</b>	86.1	85.8	93.3	93.0	94.5	97.9
	<b>5th Gd:</b>	94.0	91.5	99.1	93.4	94.3	100.0
	<hr/>						
600	<b>3rd Gd:</b>	60.9	62.0	71.7	55.3	63.3	62.8
<b>Wendell Elementary</b>	<b>4th Gd:</b>	76.2	73.3	76.2	92.1	91.9	87.2
	<b>5th Gd:</b>	78.5	90.2	86.5	88.5	91.3	94.4
	<hr/>						
606	<b>3rd Gd:</b>	87.1	86.8	93.4	86.5	89.7	93.5
<b>West Lake Elementary</b>	<b>4th Gd:</b>	88.8	89.4	93.5	97.2	94.7	99.4
	<b>5th Gd:</b>	91.3	94.3	96.1	97.1	94.9	97.7
	<hr/>						
616	<b>3rd Gd:</b>	81.8	82.0	81.5	85.4	82.5	88.7
<b>Wilburn Elementary</b>	<b>4th Gd:</b>	86.4	82.3	84.3	94.2	90.8	92.2
	<b>5th Gd:</b>	82.9	91.1	90.1	85.5	93.8	93.7
	<hr/>						
618	<b>3rd Gd:</b>		81.6	78.7		70.1	72.1
<b>Wildwood Forest Elem.</b>	<b>4th Gd:</b>		74.4	82.8		84.4	85.0
	<b>5th Gd:</b>			88.8			88.8
	<hr/>						
620	<b>3rd Gd:</b>	72.7	86.5	79.3	77.3	82.7	71.2
<b>Wiley Elementary</b>	<b>4th Gd:</b>	80.0	85.0	75.9	90.0	93.3	89.5
	<b>5th Gd:</b>	78.9	94.6	90.0	75.4	91.1	88.3
	<hr/>						
624	<b>3rd Gd:</b>	76.0	87.1	82.1	65.9	86.5	92.9
<b>Willow Springs Elem.</b>	<b>4th Gd:</b>	68.7	76.5	83.7	78.8	84.0	95.4
	<b>5th Gd:</b>	88.8	86.5	90.4	93.9	94.2	95.7
	<hr/>						
626	<b>3rd Gd:</b>			81.3			81.6
<b>Yates Mill Elementary</b>	<b>4th Gd:</b>			89.9			95.7
	<b>5th Gd:</b>			91.7			97.9
	<hr/>						
628	<b>3rd Gd:</b>	81.9	83.7	81.3	81.9	88.8	81.3
<b>York Elementary</b>	<b>4th Gd:</b>	81.5	81.9	85.4	87.3	88.6	89.9
	<b>5th Gd:</b>	89.5	92.8	85.1	90.5	92.9	89.7
	<hr/>						
632	<b>3rd Gd:</b>	80.2	76.4	74.1	78.1	79.0	79.7
<b>Zebulon Elementary</b>	<b>4th Gd:</b>	73.3	72.9	83.9	94.1	90.6	92.4
	<b>5th Gd:</b>	87.1	79.1	78.2	92.2	91.2	86.3
	<hr/>						

**Percent of Students In Levels III and IV on EOG Tests for Three Years**

		Reading			Mathematics		
		1999	2000	2001	1999	2000	2001
312	<b>6th Gd:</b>	85.2	84.8	88.4	89.4	91.2	92.7
<b>Apex Middle</b>	<b>7th Gd:</b>	85.4	88.6	92.9	85.7	91.8	93.9
	<b>8th Gd:</b>	88.2	88.6	92.7	87.4	90.2	92.7
356	<b>6th Gd:</b>	76.1	72.5	73.6	82.3	80.3	81.6
<b>Carnage Middle</b>	<b>7th Gd:</b>	78.7	76.6	75.5	81.5	84.1	76.0
	<b>8th Gd:</b>	81.8	84.7	85.4	79.5	79.7	83.7
360	<b>6th Gd:</b>	78.9	72.7	72.2	81.6	85.8	83.2
<b>Carroll Middle</b>	<b>7th Gd:</b>	89.0	87.9	85.0	90.6	92.8	81.7
	<b>8th Gd:</b>	89.9	91.3	90.8	86.7	88.3	88.4
370	<b>6th Gd:</b>			83.1			87.1
<b>Centennial Middle</b>	<b>7th Gd:</b>			75.9			78.6
	<b>8th Gd:</b>			88.9			80.8
388	<b>6th Gd:</b>	79.7	73.2	83.4	84.3	82.9	88.9
<b>Daniels Middle</b>	<b>7th Gd:</b>	79.4	84.0	84.5	80.3	82.8	83.2
	<b>8th Gd:</b>	87.9	87.1	91.2	83.9	85.4	84.8
391	<b>6th Gd:</b>	91.0	90.1	90.8	90.1	92.1	95.4
<b>Davis Drive Middle</b>	<b>7th Gd:</b>	89.8	91.5	92.4	92.5	93.6	95.1
	<b>8th Gd:</b>	94.4	93.2	95.0	90.8	92.7	93.5
394	<b>6th Gd:</b>		80.1	79.4		87.5	87.3
<b>Dillard Middle</b>	<b>7th Gd:</b>		89.0	86.3		92.4	88.0
	<b>8th Gd:</b>			95.2			92.6
399	<b>6th Gd:</b>	89.7	83.7	89.3	93.7	91.3	95.8
<b>Durant Road Middle</b>	<b>7th Gd:</b>	89.8	91.5	91.0	91.9	93.9	93.2
	<b>8th Gd:</b>	92.4	95.6	97.4	89.7	90.9	93.6
400	<b>6th Gd:</b>	79.8	77.4	79.3	85.7	87.0	88.0
<b>East Cary Middle</b>	<b>7th Gd:</b>	93.4	83.7	85.9	92.6	86.5	88.4
	<b>8th Gd:</b>	94.2	93.2	89.2	92.8	91.0	90.8
404	<b>6th Gd:</b>	68.1	58.6	69.2	71.1	73.7	79.0
<b>East Garner Middle</b>	<b>7th Gd:</b>	79.7	73.2	71.7	76.5	77.5	80.3
	<b>8th Gd:</b>	80.4	88.3	91.2	76.3	80.9	78.9
408	<b>6th Gd:</b>	79.4	68.7	77.0	76.4	73.0	81.9
<b>East Millbrook Middle</b>	<b>7th Gd:</b>	79.6	81.2	77.1	79.3	78.5	83.4
	<b>8th Gd:</b>	79.9	83.3	86.2	67.2	76.5	74.9
410	<b>6th Gd:</b>	68.9	65.7	68.3	76.3	77.0	77.3
<b>East Wake Middle</b>	<b>7th Gd:</b>	84.4	72.9	72.5	84.0	76.6	80.3
	<b>8th Gd:</b>	77.4	80.6	82.3	72.9	77.8	76.7

**Percent of Students In Levels III and IV on EOG Tests for Three Years**

		Reading			Mathematics		
		1999	2000	2001	1999	2000	2001
424	<b>6th Gd:</b>	70.8	75.5	70.7	82.4	82.5	85.2
<b>Fuquay-Varina Middle</b>	<b>7th Gd:</b>	79.9	79.5	85.5	80.2	81.1	84.9
	<b>8th Gd:</b>	79.4	83.7	87.6	77.0	78.1	81.4
471	<b>6th Gd:</b>	83.6	81.9	86.8	87.6	86.6	92.4
<b>Leesville Road Middle</b>	<b>7th Gd:</b>	92.4	88.2	93.1	92.5	92.0	90.7
	<b>8th Gd:</b>	92.1	94.0	93.4	87.8	92.0	92.8
472	<b>6th Gd:</b>	87.3	85.3	87.7	89.1	89.7	92.6
<b>Ligon Middle</b>	<b>7th Gd:</b>	82.9	92.0	90.5	88.1	90.9	95.5
	<b>8th Gd:</b>	86.1	87.5	95.8	81.0	82.5	92.8
484	<b>6th Gd:</b>		93.5	92.0		94.3	96.7
<b>Lufkin Rd. Middle</b>	<b>7th Gd:</b>			96.0			98.4
	<b>8th Gd:</b>						
492	<b>6th Gd:</b>	83.0	81.8	82.2	89.6	89.0	89.6
<b>Martin Middle</b>	<b>7th Gd:</b>	87.3	83.5	88.5	90.5	86.7	90.0
	<b>8th Gd:</b>	90.9	89.0	90.0	87.4	86.9	86.4
512	<b>6th Gd:</b>	59.9	63.4	63.0	67.8	73.9	72.8
<b>North Garner Middle</b>	<b>7th Gd:</b>	74.3	67.2	68.6	84.4	77.2	84.6
	<b>8th Gd:</b>	80.4	80.9	79.2	77.4	80.5	69.3
592	<b>6th Gd:</b>	80.4	72.9	71.2	80.5	84.4	83.2
<b>Wake Forest-Rolesville Mid.</b>	<b>7th Gd:</b>	83.6	87.1	79.9	83.8	85.0	81.6
	<b>8th Gd:</b>	81.2	90.7	91.6	80.1	86.5	85.5
594	<b>6th Gd:</b>		81.8	86.9		92.4	93.2
<b>Wakefield Middle</b>	<b>7th Gd:</b>			86.2			87.5
	<b>8th Gd:</b>						
604	<b>6th Gd:</b>	88.3	79.7	83.9	90.9	90.0	90.7
<b>West Cary Middle</b>	<b>7th Gd:</b>	89.0	91.2	89.9	92.2	90.7	90.5
	<b>8th Gd:</b>	88.8	90.9	93.5	84.6	90.6	94.4
607	<b>6th Gd:</b>	90.3	89.8	92.2	94.7	94.6	94.9
<b>West Lake Middle</b>	<b>7th Gd:</b>	92.8	91.8	96.0	94.2	94.7	95.8
	<b>8th Gd:</b>	96.3	95.0	96.8	96.1	93.7	95.0
608	<b>6th Gd:</b>	76.1	77.5	88.7	75.4	84.1	92.7
<b>West Millbrook Middle</b>	<b>7th Gd:</b>	78.2	85.0	86.7	85.1	85.3	93.3
	<b>8th Gd:</b>	91.2	85.2	92.4	89.4	83.6	90.4
636	<b>6th Gd:</b>	68.4	67.5	68.9	77.0	73.2	84.0
<b>Zebulon Middle</b>	<b>7th Gd:</b>	75.6	77.7	75.2	90.1	84.1	79.3
	<b>8th Gd:</b>	77.6	86.0	83.5	73.3	79.2	84.3

## EOG Mean Scale Scores for Three Years

		Reading			Mathematics		
		1999	2000	2001	1999	2000	2001
304 Adams Elementary	<b>3rd Gd:</b>	149.7	151.8	152.9	146.2	149.7	256.5
	<b>4th Gd:</b>	154.0	154.8	157.3	157.9	159.2	263.8
	<b>5th Gd:</b>	158.0	160.3	160.3	163.3	166.2	266.4
308 Apex Elementary	<b>3rd Gd:</b>	151.1	153.0	152.7	147.7	148.6	256.6
	<b>4th Gd:</b>	154.7	156.5	157.0	157.0	158.6	262.8
	<b>5th Gd:</b>	160.8	160.9	161.6	166.1	165.3	267.6
320 Aversboro Elementary	<b>3rd Gd:</b>	145.8	147.9	148.2	144.0	143.9	250.6
	<b>4th Gd:</b>	151.5	147.4	148.7	152.5	150.7	254.7
	<b>5th Gd:</b>	153.4	155.3	153.6	155.4	156.2	255.7
326 Baileywick Elementary	<b>3rd Gd:</b>	149.2	151.6	150.9	144.7	149.5	255.1
	<b>4th Gd:</b>	151.8	152.9	154.7	153.6	155.6	259.9
	<b>5th Gd:</b>	156.5	160.0	160.6	161.3	163.5	265.8
328 Baucom Elementary	<b>3rd Gd:</b>	152.7	153.9	153.6	149.2	149.2	255.6
	<b>4th Gd:</b>	155.4	156.4	156.9	158.0	160.0	261.5
	<b>5th Gd:</b>	159.3	161.2	162.1	164.5	167.1	268.3
334 Brassfield Elementary	<b>3rd Gd:</b>	148.8	152.0	155.4	145.9	151.3	258.9
	<b>4th Gd:</b>	154.4	155.3	158.6	156.8	160.9	265.7
	<b>5th Gd:</b>	158.6	159.7	163.0	164.5	165.1	270.4
336 Brentwood Elementary	<b>3rd Gd:</b>	144.1	145.0	144.5	141.4	142.8	249.6
	<b>4th Gd:</b>	151.3	147.2	147.9	153.9	152.0	252.4
	<b>5th Gd:</b>	153.9	155.4	154.5	157.4	161.7	260.4
340 Briarcliff Elementary	<b>3rd Gd:</b>	149.6	152.5	151.2	146.6	149.5	253.6
	<b>4th Gd:</b>	151.8	152.2	156.1	152.4	154.8	260.7
	<b>5th Gd:</b>	157.2	159.0	161.8	160.7	164.2	265.2
344 Brooks Elementary	<b>3rd Gd:</b>	146.5	144.5	147.9	142.2	141.2	250.0
	<b>4th Gd:</b>	149.8	148.0	150.9	150.6	147.8	255.0
	<b>5th Gd:</b>	159.0	156.5	158.2	162.6	159.8	261.6
352 Bugg Elementary	<b>3rd Gd:</b>	151.2	150.7	150.5	146.6	146.7	252.4
	<b>4th Gd:</b>	150.6	152.6	155.9	151.7	154.2	259.4
	<b>5th Gd:</b>	154.9	156.4	158.5	153.9	158.2	261.1
362 Carver Elementary	<b>3rd Gd:</b>	142.1	146.0	147.1	140.1	142.9	250.3
	<b>4th Gd:</b>	148.7	148.5	151.8	150.1	153.0	257.6
	<b>5th Gd:</b>	152.2	154.8	155.2	155.2	161.1	261.7
364 Cary Elementary	<b>3rd Gd:</b>	147.3	146.9	148.3	144.5	143.5	251.4
	<b>4th Gd:</b>	148.8	151.3	151.2	151.4	153.8	256.2
	<b>5th Gd:</b>	157.2	156.0	156.8	163.5	161.3	261.2
376 Combs Elementary	<b>3rd Gd:</b>	151.1	150.2	152.9	149.1	149.2	256.0
	<b>4th Gd:</b>	151.4	157.2	155.7	154.4	161.2	263.3
	<b>5th Gd:</b>	158.3	158.8	160.9	165.7	165.2	266.5

## EOG Mean Scale Scores for Three Years

		Reading			Mathematics		
		1999	2000	2001	1999	2000	2001
380 Conn Elementary	3rd Gd:	146.9	144.5	147.2	143.3	140.4	250.7
	4th Gd:	151.1	152.2	149.4	152.8	154.8	255.8
	5th Gd:	154.4	155.4	158.1	159.9	160.9	262.4
384 Creech Road Elementary	3rd Gd:	143.8	141.1	146.2	140.3	136.2	249.7
	4th Gd:	146.7	146.4	149.6	150.1	149.8	255.3
	5th Gd:	153.5	152.3	154.5	156.9	154.6	256.8
390 Davis Drive Elementary	3rd Gd:	153.9	154.8	154.7	152.4	155.2	257.7
	4th Gd:	156.9	158.0	158.8	161.5	162.1	265.1
	5th Gd:	160.9	162.2	163.2	165.5	168.4	268.0
393 Dillard Dr. Elementary	3rd Gd:		149.7	151.2		145.9	255.6
	4th Gd:		154.8	155.0		159.4	259.3
	5th Gd:		158.9	158.9		164.6	262.1
396 Douglas Elementary	3rd Gd:	147.5	149.2	148.3	141.8	142.8	251.1
	4th Gd:	151.9	154.1	155.0	154.2	155.6	257.9
	5th Gd:	155.6	157.8	159.4	159.2	160.7	262.8
398 Durant Road Elementary	3rd Gd:	150.5	150.9	153.7	147.3	148.4	257.0
	4th Gd:	155.2	155.3	155.4	159.0	159.2	260.3
	5th Gd:	159.0	161.3	160.8	166.0	167.5	268.1
414 Farmington Woods Elementa	3rd Gd:	148.1	148.8	151.3	145.4	144.6	255.5
	4th Gd:	151.6	153.1	154.6	153.1	154.4	260.0
	5th Gd:	157.3	157.9	159.3	161.7	160.2	265.2
415 Fox Road Elementary	3rd Gd:	148.5	148.7	149.0	143.7	143.5	252.0
	4th Gd:	151.0	151.8	152.3	152.6	153.6	257.3
	5th Gd:	156.6	157.4	157.4	161.2	159.9	261.0
416 Fuller Elementary	3rd Gd:	147.1	148.6	150.3	141.5	143.7	252.1
	4th Gd:	151.3	151.6	154.7	152.2	152.8	257.7
	5th Gd:	154.7	156.6	158.8	156.7	158.3	260.3
420 Fuquay-Varina Elementary	3rd Gd:	144.3	146.1	147.7	139.3	143.2	252.2
	4th Gd:	149.2	148.4	152.8	151.9	151.2	258.4
	5th Gd:	155.6	155.5	156.1	159.4	161.2	259.2
439 Green Hope Elementary	3rd Gd:			154.3			257.9
	4th Gd:			159.6			265.7
	5th Gd:			163.8			273.7
440 Green Elementary	3rd Gd:	150.6	151.7	152.4	147.4	149.0	256.3
	4th Gd:	152.6	154.1	155.5	156.4	157.4	261.5
	5th Gd:	156.6	159.6	159.4	162.2	166.1	266.4
442 Hilburn Drive Elementary	3rd Gd:	149.7	150.1	151.4	145.5	147.3	255.4
	4th Gd:		151.4	153.4		152.4	258.9
	5th Gd:		158.4	160.6		163.5	266.9

## EOG Mean Scale Scores for Three Years

		Reading			Mathematics		
		1999	2000	2001	1999	2000	2001
446	<b>3rd Gd:</b>	143.5	144.2	147.3	140.5	139.9	249.6
<b>Hodge Road Elementary</b>	<b>4th Gd:</b>	147.3	147.0	148.8	153.0	149.9	253.2
	<b>5th Gd:</b>	152.2	154.2	154.5	154.6	157.4	258.5
447	<b>3rd Gd:</b>	148.8	147.8	148.8	144.4	145.5	252.6
<b>Holly Springs Elementary</b>	<b>4th Gd:</b>	151.3	152.1	152.2	152.9	155.9	258.1
	<b>5th Gd:</b>	154.6	156.6	157.8	159.9	162.3	262.4
448	<b>3rd Gd:</b>	149.9	152.6	150.9	147.2	149.4	254.9
<b>Hunter Elementary</b>	<b>4th Gd:</b>	157.5	155.2	155.4	158.4	157.6	260.0
	<b>5th Gd:</b>	158.1	162.1	161.5	162.2	166.1	267.6
452	<b>3rd Gd:</b>	149.5	151.7	150.2	145.4	149.7	254.3
<b>Jeffreys Grove Elementary</b>	<b>4th Gd:</b>	153.2	155.4	155.7	156.7	159.2	260.4
	<b>5th Gd:</b>	156.6	158.7	158.7	160.5	163.7	264.2
454	<b>3rd Gd:</b>	150.7	152.1	150.7	146.8	149.0	254.5
<b>Jones Dairy Elementary</b>	<b>4th Gd:</b>	153.6	154.2	156.3	156.3	156.5	260.2
	<b>5th Gd:</b>	159.3	160.5	159.3	162.5	164.8	264.0
456	<b>3rd Gd:</b>	147.6	147.1	149.4	145.9	144.7	251.9
<b>Joyner Elementary</b>	<b>4th Gd:</b>	151.7	151.5	152.1	155.8	152.9	255.9
	<b>5th Gd:</b>	159.7	158.7	157.0	164.2	162.8	261.4
460	<b>3rd Gd:</b>	151.9	154.5	153.6	150.3	154.0	256.4
<b>Kingswood Elementary</b>	<b>4th Gd:</b>	155.5	155.8	157.2	160.9	162.5	264.4
	<b>5th Gd:</b>	160.9	162.2	162.1	171.4	172.6	273.1
464	<b>3rd Gd:</b>	145.4	143.9	146.1	140.1	138.3	249.5
<b>Knightdale Elementary</b>	<b>4th Gd:</b>	146.1	150.0	149.4	147.4	150.4	253.6
	<b>5th Gd:</b>	153.0	153.1	156.1	155.7	154.0	257.1
468	<b>3rd Gd:</b>	149.7	149.9	150.4	146.3	146.4	256.2
<b>Lacy Elementary</b>	<b>4th Gd:</b>	153.0	155.8	154.4	154.8	157.8	259.3
	<b>5th Gd:</b>	159.2	160.4	161.8	163.4	162.5	267.9
469	<b>3rd Gd:</b>		148.7	153.1		146.5	257.1
<b>Leesville Road Elementary</b>	<b>4th Gd:</b>	152.8	155.0	157.4	155.6	158.6	262.3
	<b>5th Gd:</b>	157.3	160.4	161.6	163.2	167.0	267.4
470	<b>3rd Gd:</b>	149.2	151.6	150.2	145.5	149.4	252.9
<b>Lead Mine Elementary</b>	<b>4th Gd:</b>	152.9	153.0	154.8	155.8	155.6	259.6
	<b>5th Gd:</b>	157.1	158.9	160.3	161.2	163.5	265.7
476	<b>3rd Gd:</b>	145.4	146.9	148.2	139.0	145.0	252.5
<b>Lincoln Heights Elementary</b>	<b>4th Gd:</b>	149.6	148.9	155.1	149.4	151.2	257.7
	<b>5th Gd:</b>	156.5	156.3	157.0	160.7	158.2	259.8
480	<b>3rd Gd:</b>	144.1	147.6	149.4	140.0	144.9	251.4
<b>Lockhart Elementary</b>	<b>4th Gd:</b>	146.9	151.3	154.3	146.5	154.1	258.6
	<b>5th Gd:</b>	155.4	156.6	158.1	158.4	157.9	261.1

## EOG Mean Scale Scores for Three Years

		Reading			Mathematics		
		1999	2000	2001	1999	2000	2001
488	<b>3rd Gd:</b>	148.6	148.6	148.8	146.3	145.7	251.6
<b>Lynn Road Elementary</b>	<b>4th Gd:</b>	151.9	151.9	153.2	154.9	156.3	257.1
	<b>5th Gd:</b>	155.5	156.3	156.3	159.9	159.7	260.9
	<hr/>						
494	<b>3rd Gd:</b>			149.3			252.3
<b>Middle Creek Elementary</b>	<b>4th Gd:</b>			150.9			255.8
	<b>5th Gd:</b>			155.4			261.6
	<hr/>						
496	<b>3rd Gd:</b>	148.1	146.0	147.1	144.1	142.4	249.7
<b>Millbrook Elementary</b>	<b>4th Gd:</b>	151.3	151.6	150.5	151.4	151.3	252.5
	<b>5th Gd:</b>	155.9	157.1	157.0	157.8	162.3	259.6
	<hr/>						
504	<b>3rd Gd:</b>	154.6	155.0	154.8	152.8	154.3	258.5
<b>Morrisville Elementary</b>	<b>4th Gd:</b>	156.5	158.4	158.3	159.9	162.0	263.8
	<b>5th Gd:</b>	160.4	162.3	163.1	166.9	168.0	269.3
	<hr/>						
516	<b>3rd Gd:</b>	149.3	152.5	151.9	144.6	149.7	254.0
<b>North Ridge Elementary</b>	<b>4th Gd:</b>	152.3	152.5	156.1	155.1	156.3	259.3
	<b>5th Gd:</b>	156.5	158.6	159.2	160.6	162.4	262.7
	<hr/>						
520	<b>3rd Gd:</b>	150.8	150.9	152.0	148.3	148.4	255.1
<b>Northwoods Elementary</b>	<b>4th Gd:</b>	153.5	156.0	155.2	155.6	161.1	259.3
	<b>5th Gd:</b>	158.3	158.6	160.7	162.7	164.0	266.2
	<hr/>						
522	<b>3rd Gd:</b>	153.4	154.3	154.4	151.4	152.7	257.3
<b>Oak Grove Elementary</b>	<b>4th Gd:</b>	157.5	157.6	157.6	160.8	160.4	264.2
	<b>5th Gd:</b>	161.2	162.7	163.2	168.1	169.3	271.4
	<hr/>						
523	<b>3rd Gd:</b>	151.4	152.3	152.7	150.4	151.3	256.7
<b>Olive Chapel Elementary</b>	<b>4th Gd:</b>	153.8	154.4	157.2	155.8	156.5	262.3
	<b>5th Gd:</b>	157.6	159.6	160.4	161.8	163.6	264.7
	<hr/>						
524	<b>3rd Gd:</b>	148.1	149.9	147.8	142.7	149.8	250.3
<b>Olds @ Cardinal Gibbons</b>	<b>4th Gd:</b>	156.2	151.3	153.7	159.8	157.5	260.6
	<b>5th Gd:</b>	158.8	159.5	157.7	161.8	165.1	261.9
	<hr/>						
525	<b>3rd Gd:</b>		151.5	152.6		149.2	255.4
<b>Partnership Elementary</b>	<b>4th Gd:</b>			154.6			259.5
	<b>5th Gd:</b>						
	<hr/>						
530	<b>3rd Gd:</b>	148.2	149.9	150.7	145.5	148.0	254.2
<b>Penny Road Elementary</b>	<b>4th Gd:</b>	151.3	153.1	151.3	153.7	155.8	257.0
	<b>5th Gd:</b>	158.3	160.3	162.2	165.1	166.7	267.9
	<hr/>						
531	<b>3rd Gd:</b>	151.7	150.7	152.5	149.5	147.6	255.5
<b>Pleasant Union Elementary</b>	<b>4th Gd:</b>	156.8	155.9	156.2	158.3	156.6	260.1
	<b>5th Gd:</b>	159.5	161.1	160.2	162.3	162.5	261.8
	<hr/>						
532	<b>3rd Gd:</b>	145.8	149.9	150.7	140.5	146.3	253.4
<b>Poe Elementary</b>	<b>4th Gd:</b>	156.8	150.4	153.1	155.8	152.3	256.3
	<b>5th Gd:</b>		166.0	157.5		167.4	260.6
	<hr/>						

### EOG Mean Scale Scores for Three Years

		Reading			Mathematics		
		1999	2000	2001	1999	2000	2001
536 Powell Elementary	3rd Gd:	147.0	145.1	146.8	143.8	141.1	250.1
	4th Gd:	153.4	153.9	150.1	156.6	156.8	253.7
	5th Gd:	157.9	158.0	159.0	164.5	164.9	265.2
540 Rand Road Elementary	3rd Gd:	145.5	146.1	145.5	143.2	144.0	249.5
	4th Gd:	148.5	148.4	150.2	151.2	148.5	254.8
	5th Gd:	153.5	153.6	155.0	158.4	156.7	258.4
542 Reedy Creek Elem.	3rd Gd:		150.2	149.6		146.0	252.5
	4th Gd:		153.1	152.9		156.4	258.1
	5th Gd:		159.1	159.3		163.2	262.6
544 Rolesville Elementary	3rd Gd:	143.8	146.5	146.4	139.6	142.1	250.1
	4th Gd:	148.9	149.3	150.2	151.1	151.6	254.5
	5th Gd:	154.0	155.6	156.8	156.0	158.8	258.5
548 Root Elementary	3rd Gd:	148.8	148.7	150.8	145.7	148.6	254.2
	4th Gd:	156.5	156.4	155.4	158.7	161.0	263.1
	5th Gd:	157.9	160.7	161.2	162.2	168.1	267.0
550 Salem Elementary	3rd Gd:			154.1			257.2
	4th Gd:			156.6			261.1
	5th Gd:			158.6			263.4
560 Smith Elementary	3rd Gd:	147.0	145.5	145.8	144.3	142.2	250.2
	4th Gd:	149.7	149.2	151.4	151.5	152.9	256.4
	5th Gd:	155.3	155.9	155.2	159.8	157.5	256.3
564 Stough Elementary	3rd Gd:	150.5	151.4	152.7	148.9	150.3	256.5
	4th Gd:	153.1	153.4	155.5	156.6	155.7	260.1
	5th Gd:	157.6	159.3	158.6	163.1	163.8	262.6
568 Swift Creek Elementary	3rd Gd:	147.4	149.0	149.0	142.9	146.0	252.7
	4th Gd:	151.8	153.3	150.6	154.0	156.5	255.0
	5th Gd:	157.0	158.7	158.1	159.7	161.7	260.4
570 Timber Drive Elementary	3rd Gd:	152.1	152.4	153.1	149.7	150.1	257.3
	4th Gd:	153.5	154.2	155.8	156.1	157.7	261.6
	5th Gd:	158.4	158.6	159.2	165.1	162.9	264.6
572 Underwood Elementary	3rd Gd:	146.9	143.6	146.4	141.8	137.5	250.7
	4th Gd:	152.2	151.3	149.6	152.3	153.0	253.8
	5th Gd:	156.2	159.0	158.2	163.4	163.1	264.6
576 Vance Elementary	3rd Gd:	147.2	148.2	148.0	143.0	145.9	252.2
	4th Gd:	150.7	149.6	151.4	155.8	154.1	257.5
	5th Gd:	152.9	156.6	156.3	157.9	161.8	260.8
580 Vandora Springs Elem.	3rd Gd:	145.6	149.3	149.6	142.0	148.2	254.0
	4th Gd:	148.6	151.0	154.7	152.2	155.2	260.4
	5th Gd:	153.1	155.5	157.7	159.3	159.8	261.1

### EOG Mean Scale Scores for Three Years

		Reading			Mathematics		
		1999	2000	2001	1999	2000	2001
584	<b>3rd Gd:</b>	147.1	149.0	150.3	142.3	143.9	253.3
<b>Wake Forest Elementary</b>	<b>4th Gd:</b>	150.7	150.3	152.4	153.0	152.9	256.3
	<b>5th Gd:</b>	154.3	156.9	157.6	158.6	159.0	259.8
	<hr/>						
593	<b>3rd Gd:</b>		148.6	149.5		144.2	252.1
<b>Wakefield Elem.</b>	<b>4th Gd:</b>		153.3	154.7		156.3	258.2
	<b>5th Gd:</b>			158.8			264.6
	<hr/>						
596	<b>3rd Gd:</b>	148.4	149.8	151.0	143.6	146.5	255.4
<b>Washington Elementary</b>	<b>4th Gd:</b>	153.0	154.4	155.4	156.3	157.6	260.4
	<b>5th Gd:</b>	159.1	158.9	159.4	163.6	163.5	265.4
	<hr/>						
598	<b>3rd Gd:</b>	150.9	152.8	150.3	148.7	151.1	255.0
<b>Weatherstone Elem.</b>	<b>4th Gd:</b>	153.7	154.7	155.6	157.5	160.0	262.0
	<b>5th Gd:</b>	159.2	159.4	162.4	167.5	166.8	270.9
	<hr/>						
600	<b>3rd Gd:</b>	143.8	143.8	145.3	138.1	142.8	249.0
<b>Wendell Elementary</b>	<b>4th Gd:</b>	150.3	149.9	151.3	152.8	153.7	257.7
	<b>5th Gd:</b>	155.1	157.8	156.4	159.0	161.2	261.6
	<hr/>						
606	<b>3rd Gd:</b>	151.4	151.5	153.3	149.7	149.3	256.0
<b>West Lake Elementary</b>	<b>4th Gd:</b>	154.5	155.9	156.3	158.3	159.4	262.3
	<b>5th Gd:</b>	160.0	161.1	161.2	166.5	166.5	268.7
	<hr/>						
616	<b>3rd Gd:</b>	148.3	148.6	149.4	145.8	147.0	253.6
<b>Wilburn Elementary</b>	<b>4th Gd:</b>	151.9	151.2	151.5	155.8	154.2	255.8
	<b>5th Gd:</b>	155.3	158.6	157.8	160.9	164.2	261.9
	<hr/>						
618	<b>3rd Gd:</b>		148.1	147.2		142.9	250.1
<b>Wildwood Forest Elem.</b>	<b>4th Gd:</b>		150.4	152.9		154.3	257.6
	<b>5th Gd:</b>			158.0			262.2
	<hr/>						
620	<b>3rd Gd:</b>	148.6	149.2	149.1	146.0	146.4	252.0
<b>Wiley Elementary</b>	<b>4th Gd:</b>	153.9	154.9	153.4	159.8	161.1	260.3
	<b>5th Gd:</b>	157.5	162.7	160.0	161.9	166.8	264.0
	<hr/>						
624	<b>3rd Gd:</b>	147.7	149.2	150.0	141.3	146.7	255.4
<b>Willow Springs Elem.</b>	<b>4th Gd:</b>	149.8	150.8	152.6	152.7	151.7	257.3
	<b>5th Gd:</b>	157.1	156.9	157.8	163.8	163.6	263.2
	<hr/>						
626	<b>3rd Gd:</b>			147.8			250.8
<b>Yates Mill Elementary</b>	<b>4th Gd:</b>			154.4			260.7
	<b>5th Gd:</b>			157.5			262.5
	<hr/>						
628	<b>3rd Gd:</b>	150.5	150.2	148.9	147.5	149.4	252.7
<b>York Elementary</b>	<b>4th Gd:</b>	152.1	152.6	152.9	155.8	157.5	258.6
	<b>5th Gd:</b>	157.7	158.9	158.3	164.4	164.2	264.3
	<hr/>						
632	<b>3rd Gd:</b>	146.6	146.6	145.6	144.4	144.2	250.4
<b>Zebulon Elementary</b>	<b>4th Gd:</b>	149.1	149.5	151.2	154.6	154.6	256.7
	<b>5th Gd:</b>	156.2	154.4	154.2	161.9	160.5	258.6
	<hr/>						

## EOG Mean Scale Scores for Three Years

		Reading			Mathematics		
		1999	2000	2001	1999	2000	2001
312	<b>6th Gd:</b>	159.8	160.9	161.7	168.2	170.3	268.1
<b>Apex Middle</b>	<b>7th Gd:</b>	162.5	163.4	165.9	173.4	175.4	273.9
	<b>8th Gd:</b>	164.9	165.3	166.9	177.8	180.0	275.4
	<hr/>						
356	<b>6th Gd:</b>	158.8	158.3	158.0	166.6	166.3	264.0
<b>Carnage Middle</b>	<b>7th Gd:</b>	161.6	161.4	160.8	172.6	174.0	268.4
	<b>8th Gd:</b>	164.1	164.2	165.0	176.7	176.8	274.0
	<hr/>						
360	<b>6th Gd:</b>	158.5	157.0	157.7	165.0	166.6	263.4
<b>Carroll Middle</b>	<b>7th Gd:</b>	163.0	162.8	161.2	173.9	173.7	266.9
	<b>8th Gd:</b>	164.9	165.7	164.9	177.8	178.9	271.1
	<hr/>						
370	<b>6th Gd:</b>			160.8			265.1
<b>Centennial Middle</b>	<b>7th Gd:</b>			160.2			266.6
	<b>8th Gd:</b>			163.0			269.3
	<hr/>						
388	<b>6th Gd:</b>	159.5	158.0	161.0	167.6	165.9	266.7
<b>Daniels Middle</b>	<b>7th Gd:</b>	161.5	162.8	162.0	173.1	173.9	268.8
	<b>8th Gd:</b>	165.3	164.3	166.4	177.6	177.4	273.7
	<hr/>						
391	<b>6th Gd:</b>	161.9	162.4	163.1	169.3	170.7	270.0
<b>Davis Drive Middle</b>	<b>7th Gd:</b>	163.8	164.2	164.6	175.7	177.3	273.7
	<b>8th Gd:</b>	167.5	166.5	167.3	180.6	182.0	277.0
	<hr/>						
394	<b>6th Gd:</b>		159.2	160.0		169.7	268.5
<b>Dillard Middle</b>	<b>7th Gd:</b>		163.9	162.6		179.0	271.0
	<b>8th Gd:</b>			168.2			277.5
	<hr/>						
399	<b>6th Gd:</b>	161.1	160.0	162.0	169.3	168.5	268.9
<b>Durant Road Middle</b>	<b>7th Gd:</b>	163.8	164.3	164.0	174.8	176.0	272.2
	<b>8th Gd:</b>	165.9	166.6	167.5	179.7	179.8	275.6
	<hr/>						
400	<b>6th Gd:</b>	159.8	159.1	159.3	168.1	168.9	266.1
<b>East Cary Middle</b>	<b>7th Gd:</b>	164.7	162.7	163.0	177.2	175.9	271.9
	<b>8th Gd:</b>	166.9	166.6	165.4	181.8	181.3	274.5
	<hr/>						
404	<b>6th Gd:</b>	155.3	153.1	155.4	161.0	160.2	259.8
<b>East Garner Middle</b>	<b>7th Gd:</b>	159.7	158.7	158.9	167.4	167.7	264.7
	<b>8th Gd:</b>	161.6	162.9	164.6	171.9	173.4	269.0
	<hr/>						
408	<b>6th Gd:</b>	158.0	155.8	157.4	162.1	162.6	262.8
<b>East Millbrook Middle</b>	<b>7th Gd:</b>	160.5	160.5	160.4	169.2	169.4	266.7
	<b>8th Gd:</b>	161.7	163.3	163.3	169.9	173.0	267.6
	<hr/>						
410	<b>6th Gd:</b>	155.3	155.6	155.6	162.3	163.9	260.0
<b>East Wake Middle</b>	<b>7th Gd:</b>	160.6	158.9	159.2	170.9	167.7	265.4
	<b>8th Gd:</b>	161.5	162.3	161.1	171.8	173.8	267.1
	<hr/>						
424	<b>6th Gd:</b>	156.5	157.9	156.7	164.9	166.4	264.5
<b>Fuquay-Varina Middle</b>	<b>7th Gd:</b>	160.5	161.1	162.3	170.4	170.2	267.6
	<b>8th Gd:</b>	162.3	162.7	163.7	173.7	174.6	270.2
	<hr/>						
471	<b>6th Gd:</b>	159.8	159.8	160.6	167.2	168.8	266.8
<b>Leesville Road Middle</b>	<b>7th Gd:</b>	164.9	163.3	164.5	176.6	176.9	273.6
	<b>8th Gd:</b>	166.6	168.0	167.6	179.0	182.7	277.5
	<hr/>						

## EOG Mean Scale Scores for Three Years

		Reading			Mathematics		
		1999	2000	2001	1999	2000	2001
472	<b>6th Gd:</b>	163.4	163.4	164.2	173.1	174.6	273.4
<b>Ligon Middle</b>	<b>7th Gd:</b>	163.7	166.3	166.5	177.0	180.3	278.2
	<b>8th Gd:</b>	165.7	166.3	169.3	180.1	180.9	280.2
484	<b>6th Gd:</b>		163.1	163.6		171.9	269.5
<b>Lufkin Rd. Middle</b>	<b>7th Gd:</b>			165.8			276.3
	<b>8th Gd:</b>						
492	<b>6th Gd:</b>	161.6	160.9	161.5	171.6	172.4	269.0
<b>Martin Middle</b>	<b>7th Gd:</b>	164.1	163.1	164.1	176.8	177.4	274.6
	<b>8th Gd:</b>	166.9	166.6	167.0	181.9	181.4	275.9
512	<b>6th Gd:</b>	154.2	153.8	154.3	159.1	162.5	259.9
<b>North Garner Middle</b>	<b>7th Gd:</b>	158.8	157.4	157.9	171.2	169.5	267.1
	<b>8th Gd:</b>	161.7	161.7	161.3	173.9	174.8	267.3
592	<b>6th Gd:</b>	158.6	157.1	156.5	164.0	165.5	261.9
<b>Wake Forest-Rolesville Mid.</b>	<b>7th Gd:</b>	161.7	162.4	160.6	171.6	172.1	266.2
	<b>8th Gd:</b>	162.5	164.7	164.9	174.8	177.9	272.3
594	<b>6th Gd:</b>			161.7			268.1
<b>Wakefield Middle</b>	<b>7th Gd:</b>			163.3			271.8
	<b>8th Gd:</b>						
604	<b>6th Gd:</b>	161.1	159.4	160.8	170.0	170.5	267.4
<b>West Cary Middle</b>	<b>7th Gd:</b>	163.5	163.5	164.0	174.8	174.5	272.0
	<b>8th Gd:</b>	165.2	166.2	166.9	176.8	179.8	274.9
607	<b>6th Gd:</b>	161.9	162.4	162.9	171.6	171.8	269.8
<b>West Lake Middle</b>	<b>7th Gd:</b>	165.0	164.9	165.1	177.4	178.4	272.9
	<b>8th Gd:</b>	167.5	167.6	168.2	183.7	183.3	277.7
608	<b>6th Gd:</b>	159.1	159.9	161.5	165.1	166.4	266.7
<b>West Millbrook Middle</b>	<b>7th Gd:</b>	161.3	163.1	163.7	171.9	174.2	271.7
	<b>8th Gd:</b>	166.1	163.6	167.1	179.6	176.3	274.6
636	<b>6th Gd:</b>	155.9	154.9	155.9	162.3	161.3	262.0
<b>Zebulon Middle</b>	<b>7th Gd:</b>	159.2	159.5	160.0	171.6	171.5	265.4
	<b>8th Gd:</b>	160.7	161.8	163.1	172.7	174.2	270.7