

## Dropouts from Wake County Public Schools 2002-03

**Caution:** *After submission of the official data to the NC Department of Public Instruction (NCDPI), errors were discovered in the dropout report from Phillips High School, an alternative school serving many students at risk of dropping out. Problems were attributed to staff turnover and the transition to NCWISE (a new systemwide student database) that took place during the 2002-03 school year. Dropout counts from other schools may also be low because of problems implementing NCWISE, but no other identifiable errors were found. Data in this report is from the official counts reported to NCDPI.*

Official data reported to NCDPI showed that the Wake County Public School System (WCPSS) high school (grades 9-12) dropout rate continued to decline to a seven-year low of 2.6% (N=791) in 2002-03. When compared to the largest public school systems in North Carolina, Wake County had the lowest high school dropout rate, followed by Guilford (3.0%), Mecklenburg (4.0%), Forsyth (5.3%), and Durham (5.8%).

The WCPSS rate for grades 7-12 also continued its four-year decline to 1.8% (N=830). Statewide, the 7-12 rate was 3.2%. While the rate for White students declined from 1.5% to 1.3%, Black students' dropout rate decreased from 4.0% to 2.2%. The rate for all other students decreased from 3.1% to 3.0%.

At the high school level, White students' dropout rate (2.0%) declined for the third year in a row. Black (3.3%) and Latino (6.4%) students' rates showed one-year declines. However, Asian (2.4%) and Multiracial (4.6%) students' rates increased over the previous year's rates. It should be noted that the American Indian dropout rate has been blanked out because the number of dropouts was fewer than 5.

The most dropouts from high schools occurred in grade 9 (n=296). Students in 10<sup>th</sup> grade comprised 191 of the high school dropouts; 150 were in 11<sup>th</sup> grade; and 154 were in 12<sup>th</sup> grade. Almost as many students dropped out of the 9<sup>th</sup> grade as did from the 11<sup>th</sup> and 12<sup>th</sup> grades combined. More than a fifth of the dropouts were 18 years of age or older at the time of dropping out.

### Author

Kevin Gilleland

### Contributing Staff

Chuck Dulaney



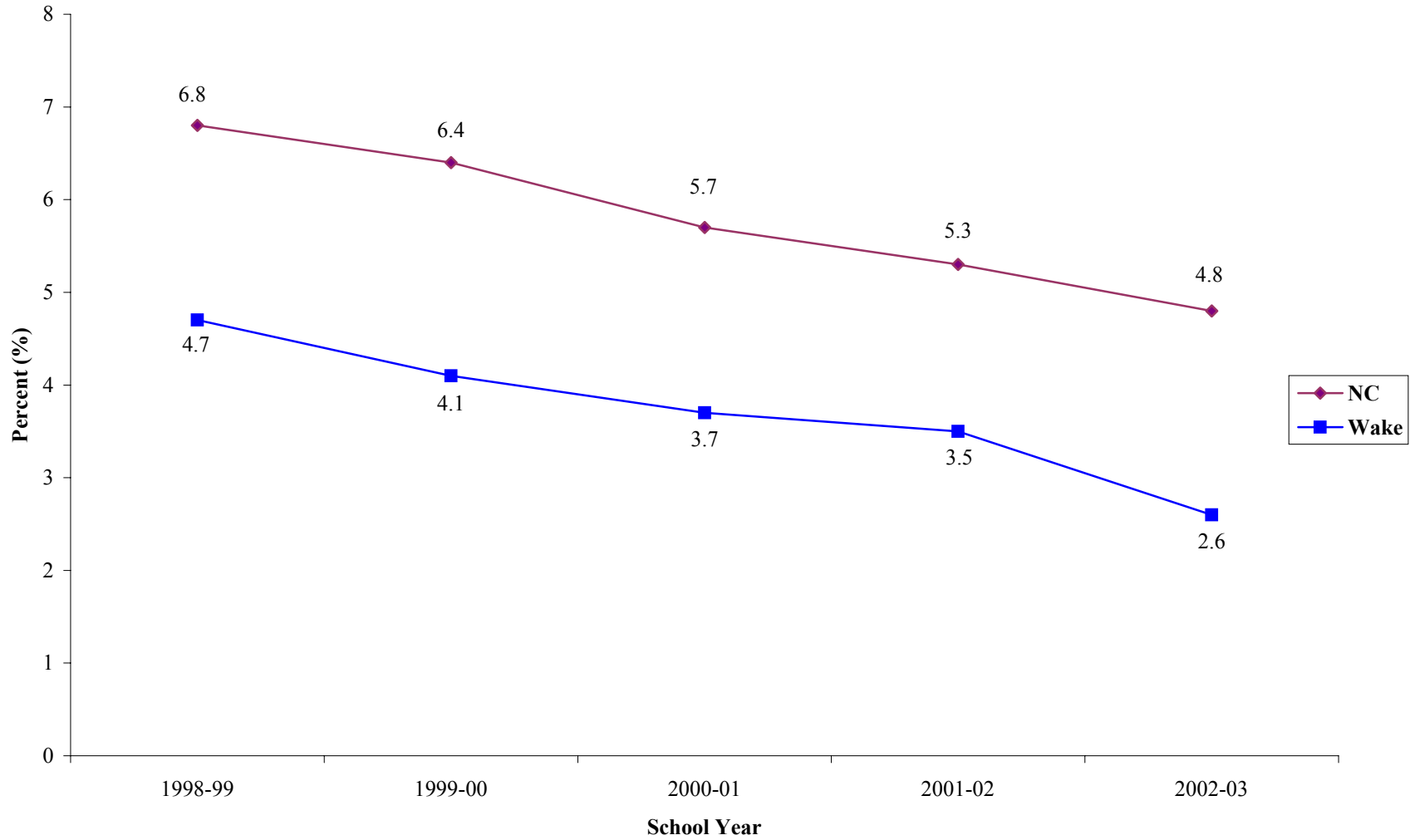
WAKE COUNTY  
PUBLIC SCHOOL SYSTEM

Approximately 75% (n=592) of the high school dropouts were not in special programs of any kind. However, 10% were Learning Disabled, and 4.3% were Academically Gifted. Twenty-seven percent of the high school dropout cohort was on free or reduced-price lunch.

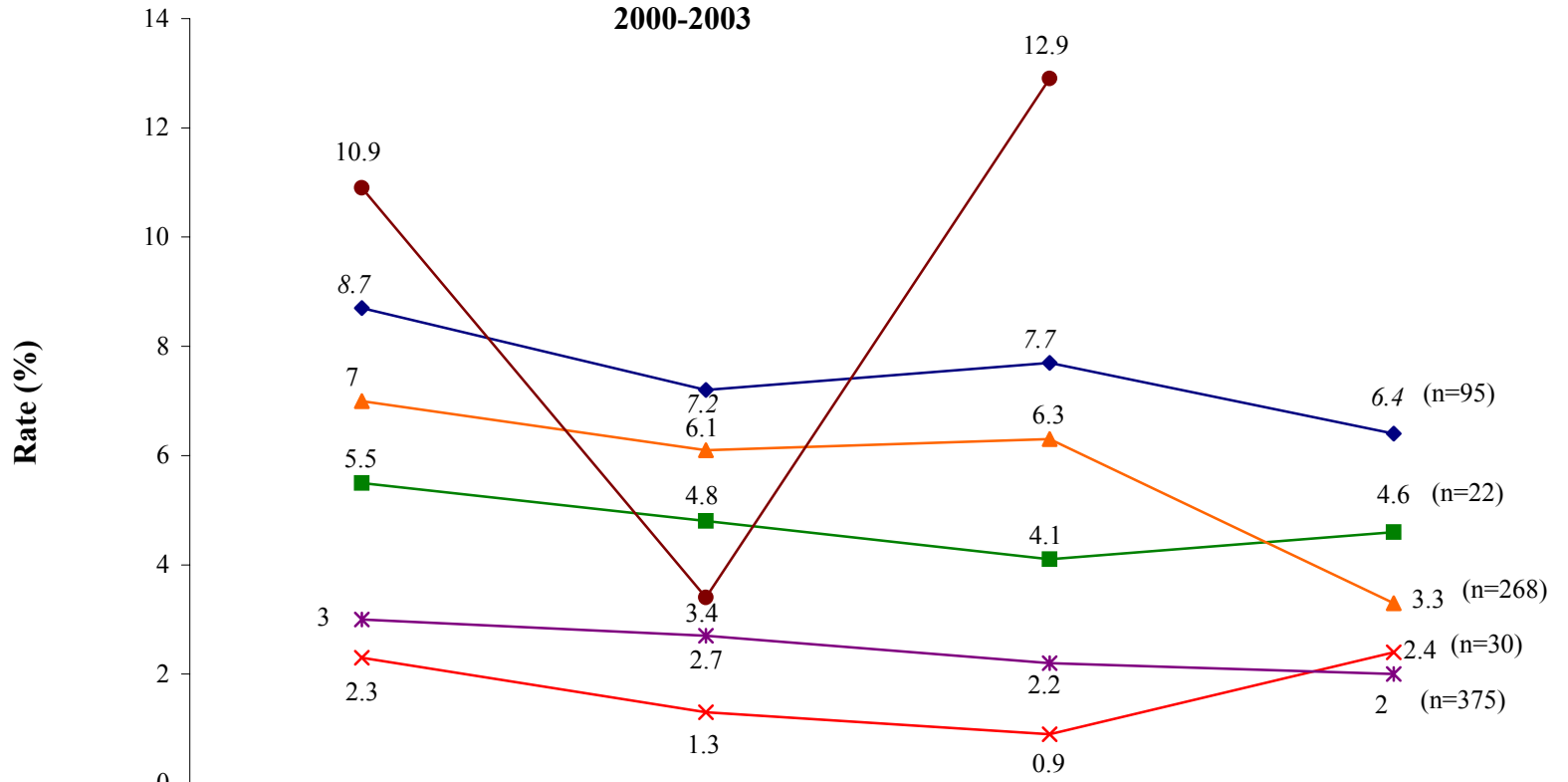
The reasons most often given for dropping out related to attendance issues (n=446), followed by moving (n=74), attendance at a community college (n=71), academic problems (n=69), and not returning after a long-term suspension (n=69). Of the entire 9-12 dropout group, more male students (62.2%) than female students (37.8%) dropped out, as did more White students (47.4%) than Black students (33.9%).

Questions concerning dropouts may be directed to Kevin Gilleland (919-850-1902) or Chuck Dulaney (919-850-1903) in the Department of Evaluation and Research at Wake County Public Schools.

**NC and WCPSS Five-Year Dropout Rates  
Grades 9-12  
1999-2003**



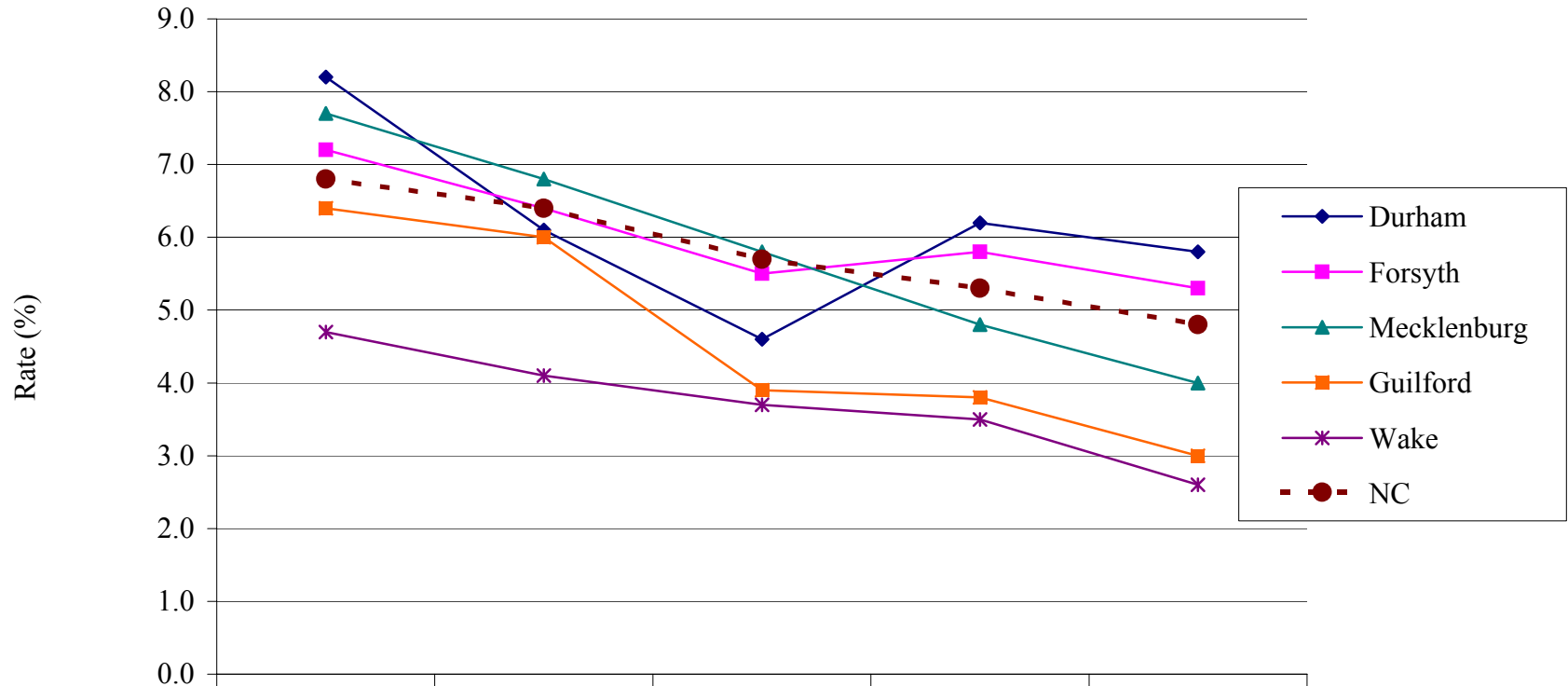
### Dropout Rates by Ethnic Group Grades 9-12 2000-2003



	1999-00	2000-01	2001-02	2002-03
◆ Hispanic/Latino	8.7	7.2	7.7	6.4
■ Multi-racial	5.5	4.8	4.1	4.6
▲ African American/Black	7	6.1	6.3	3.3
✕ Asian	2.3	1.3	0.9	2.4
✱ White	3	2.7	2.2	2
● Native American	10.9	3.4	12.9	

\*2002-03 Native American is blank because fewer than 5 students dropped out.

**Grades 9-12 Dropout Rates for Selected Districts and NC**



	1998-99	1999-00	2000-01	2001-02	2002-03
—◆— Durham	8.2	6.1	4.6	6.2	5.8
—■— Forsyth	7.2	6.4	5.5	5.8	5.3
—▲— Mecklenburg	7.7	6.8	5.8	4.8	4
—■— Guilford	6.4	6	3.9	3.8	3
—*— Wake	4.7	4.1	3.7	3.5	2.6
-●- NC	6.8	6.4	5.7	5.3	4.8

***High School Dropouts  
2002-03***

<b>School</b>				
<b>School</b>	<b>Frequency</b>	<b>Percent</b>	<b>Cumulative Frequency</b>	<b>Cumulative Percent</b>
<b>Apex</b>	48	6.07	48	6.07
<b>Athens</b>	55	6.95	103	13.02
<b>Longview</b>	8	1.01	111	14.03
<b>Broughton</b>	65	8.22	176	22.25
<b>Cary</b>	68	8.60	244	30.85
<b>East Wake</b>	92	11.63	336	42.48
<b>Enloe</b>	35	4.42	371	46.90
<b>Fuquay-Varina</b>	67	8.47	438	55.37
<b>Garner</b>	83	10.49	521	65.87
<b>Green Hope</b>	13	1.64	534	67.51
<b>Leesville</b>	23	2.91	557	70.42
<b>Middle Creek</b>	25	3.16	582	73.58
<b>Millbrook</b>	92	11.63	674	85.21
<b>Phillips</b>	13	1.64	687	86.85
<b>Sanderson</b>	24	3.03	711	89.89
<b>Southeast Raleigh</b>	13	1.64	724	91.53
<b>Wake Forest-Roles</b>	42	5.31	766	96.84
<b>Wakefield</b>	25	3.16	791	100.00

<b>Grade</b>				
<b>Dropout_Grade</b>	<b>Frequency</b>	<b>Percent</b>	<b>Cumulative Frequency</b>	<b>Cumulative Percent</b>
<b>09</b>	296	37.42	296	37.42
<b>10</b>	191	24.15	487	61.57
<b>11</b>	150	18.96	637	80.53
<b>12</b>	154	19.47	791	100.00

***High School Dropouts  
2002-03***

<b>Gender</b>				
<b>Gender</b>	<b>Frequency</b>	<b>Percent</b>	<b>Cumulative Frequency</b>	<b>Cumulative Percent</b>
<b>Female</b>	299	37.80	299	37.80
<b>Male</b>	492	62.20	791	100.00

<b>Race</b>				
<b>Race</b>	<b>Frequency</b>	<b>Percent</b>	<b>Cumulative Frequency</b>	<b>Cumulative Percent</b>
<b>American Indian</b>	1	0.13	1	0.13
<b>Asian</b>	30	3.79	31	3.92
<b>Black</b>	268	33.88	299	37.80
<b>Hispanic</b>	95	12.01	394	49.81
<b>Multi-racial</b>	22	2.78	416	52.59
<b>White</b>	375	47.41	791	100.00

<b>Age</b>				
<b>Dropout_Age</b>	<b>Frequency</b>	<b>Percent</b>	<b>Cumulative Frequency</b>	<b>Cumulative Percent</b>
<b>13</b>	1	0.13	1	0.13
<b>14</b>	1	0.13	2	0.25
<b>15</b>	26	3.29	28	3.54
<b>16</b>	102	12.90	130	16.43
<b>17</b>	229	28.95	359	45.39
<b>18</b>	262	33.12	621	78.51
<b>19</b>	132	16.69	753	95.20
<b>20</b>	30	3.79	783	98.99
<b>21</b>	8	1.01	791	100.00

***High School Dropouts  
2002-03***

<b>Reason for Dropping Out</b>				
<b>Reason</b>	<b>Frequency</b>	<b>Percent</b>	<b>Cumulative Frequency</b>	<b>Cumulative Percent</b>
<b>Academic Problems</b>	69	8.72	69	8.72
<b>Attendance Family</b>	5	0.63	74	9.36
<b>Attendance Personal</b>	34	4.30	108	13.65
<b>Attendance School</b>	57	7.21	165	20.86
<b>Attendance</b>	329	41.59	494	62.45
<b>Attendance Work</b>	21	2.65	515	65.11
<b>Commun. Coll. Dropout from Approved Program</b>	71	8.98	586	74.08
<b>Discipline Problems</b>	15	1.90	601	75.98
<b>Employment Necessary</b>	3	0.38	604	76.36
<b>Health Problems</b>	3	0.38	607	76.74
<b>Incarcerated in Adult Facility</b>	4	0.51	611	77.24
<b>Long-Term Suspension</b>	69	8.72	680	85.97
<b>Marriage</b>	1	0.13	681	86.09
<b>Move-- School Status Unknown</b>	74	9.36	755	95.45
<b>Pregnancy</b>	1	0.13	756	95.58
<b>Runaway</b>	2	0.25	758	95.83
<b>Choice of Work Over School</b>	33	4.17	791	100.00

***High School Dropouts  
2002-03***

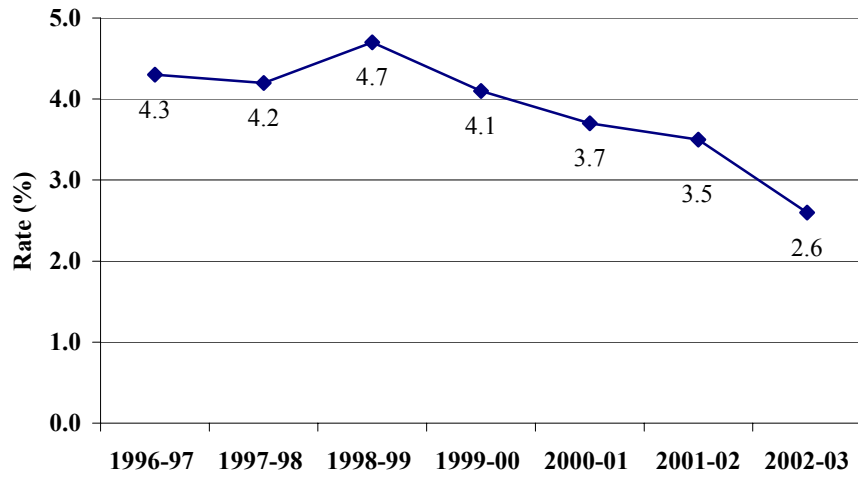
<b>Lunch Status</b>				
	<b>Frequency</b>	<b>Percent</b>	<b>Cumulative Frequency</b>	<b>Cumulative Percent</b>
<b>Free</b>	186	23.51	186	23.51
<b>Reduced</b>	30	3.79	216	27.31
<b>Not Free or Reduced</b>	575	72.69	791	100.00

<b>Special Education Status</b>				
	<b>Frequency</b>	<b>Percent</b>	<b>Cumulative Frequency</b>	<b>Cumulative Percent</b>
<b>Not Special Education</b>	592	74.84	592	74.84
<b>Learning Disabled (LD)</b>	80	10.11	672	84.96
<b>Other Health Impaired (OHI)</b>	29	3.67	701	88.62
<b>Behaviorally/Emotionally Disabled (BED)</b>	40	5.06	741	93.68
<b>Educable Mentally Disabled (EMD)</b>	15	1.90	756	95.58
<b>Academically Gifted (AG)</b>	34	4.30	790	99.87
<b>Trainable Mentally Disabled (TMD)</b>	1	0.13	791	100.00

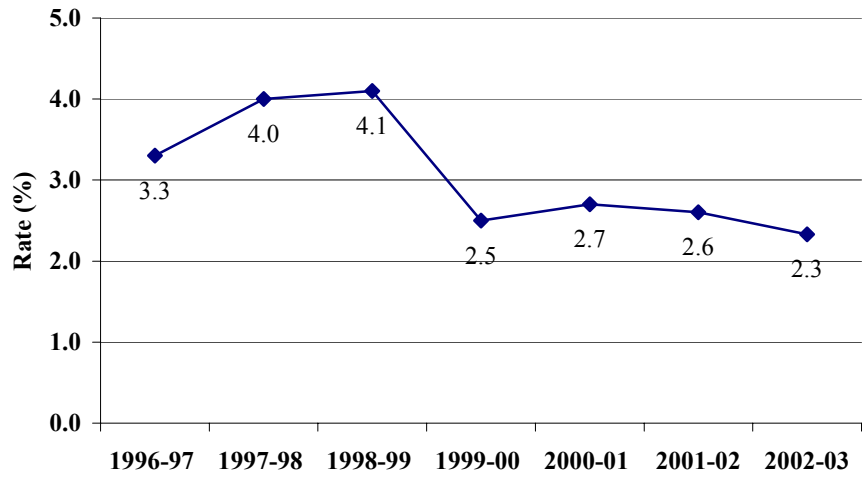
**WCPSS High School Dropout Rate (%)**  
**By School**  
**1997-2003**

<b>High School</b>	<b>1996-97</b>	<b>1997-98</b>	<b>1998-99</b>	<b>1999-00</b>	<b>2000-01</b>	<b>2001-02</b>	<b>2002-03</b>
Apex	3.3	4.0	4.1	2.5	2.7	2.6	2.3
Athens	5.2	4.8	2.8	4.2	2.8	2.6	3.0
Longview	17.4	29.2	21.1	23.8	13.3	16.5	8.2
Broughton	2.6	4.8	5.1	3.7	2.8	4.5	3.1
Cary	3.7	1.8	4.6	3.5	5.2	3.1	3.2
East Wake	6.8	6.5	6.0	7.1	6.5	6.3	4.6
Enloe	1.8	2.2	3.0	1.5	2.7	1.9	1.5
Fuquay-Varina	4.4	5.5	5.2	5.3	5.6	4.8	4.2
Garner	5.5	4.8	4.8	4.3	3.6	6.3	4.3
Green Hope					1.3	0.0	0.6
Leesville	2.1	1.8	2.5	2.7	2.0	2.3	1.1
Middle Creek							2.9
Millbrook	3.8	5.8	5.5	5.4	2.5	4.1	4.4
Phillips	36.2	27.9	35.7	45.1	29.3	24.0	4.7
Sanderson	3.2	4.1	3.4	3.9	2.4	3.1	1.4
S.E. Raleigh		2.2	2.4	2.2	3.5	2.4	0.6
Wake Forest-Rolesville	4.2	3.0	7.2	6.4	8.4	2.6	3.0
Wakefield					1.3	1.7	1.4
<b>WCPSS</b>	<b>4.3</b>	<b>4.2</b>	<b>4.7</b>	<b>4.1</b>	<b>3.7</b>	<b>3.5</b>	<b>2.6</b>

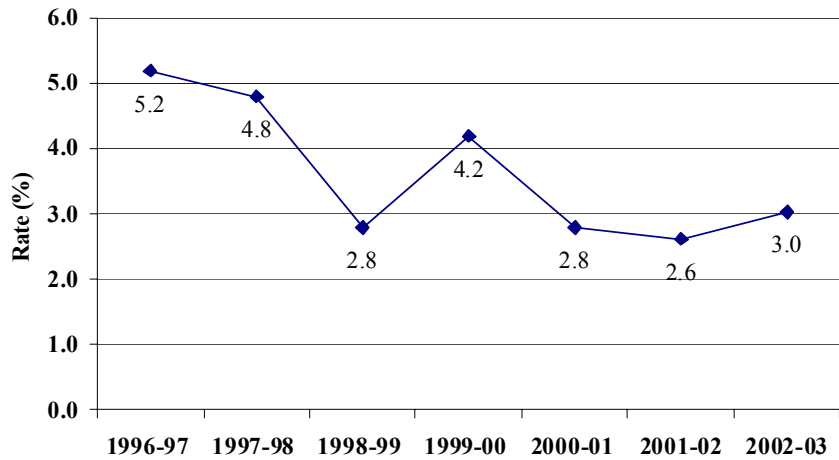
### Seven-Year Dropout Trend Wake County High Schools

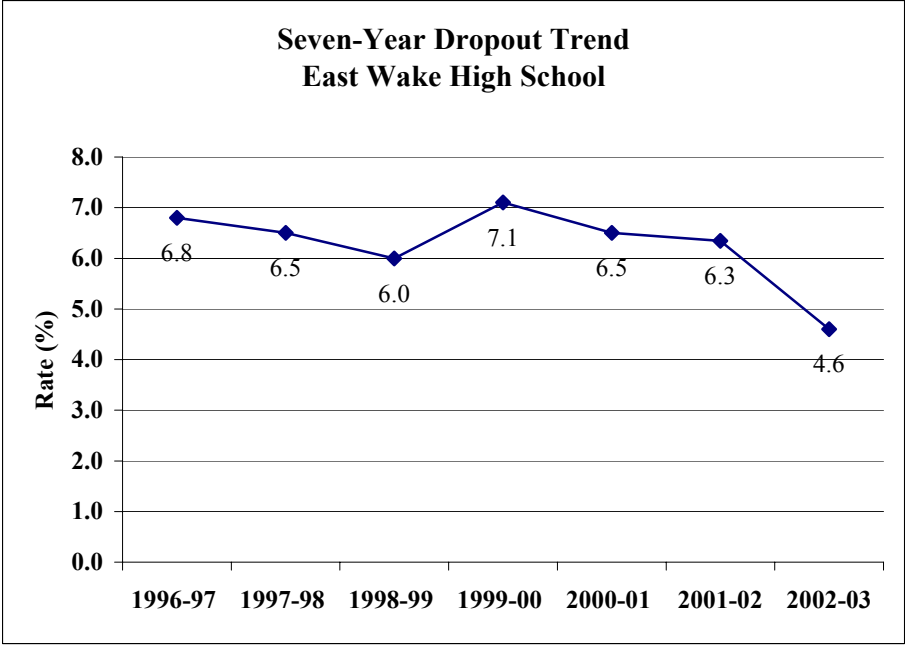
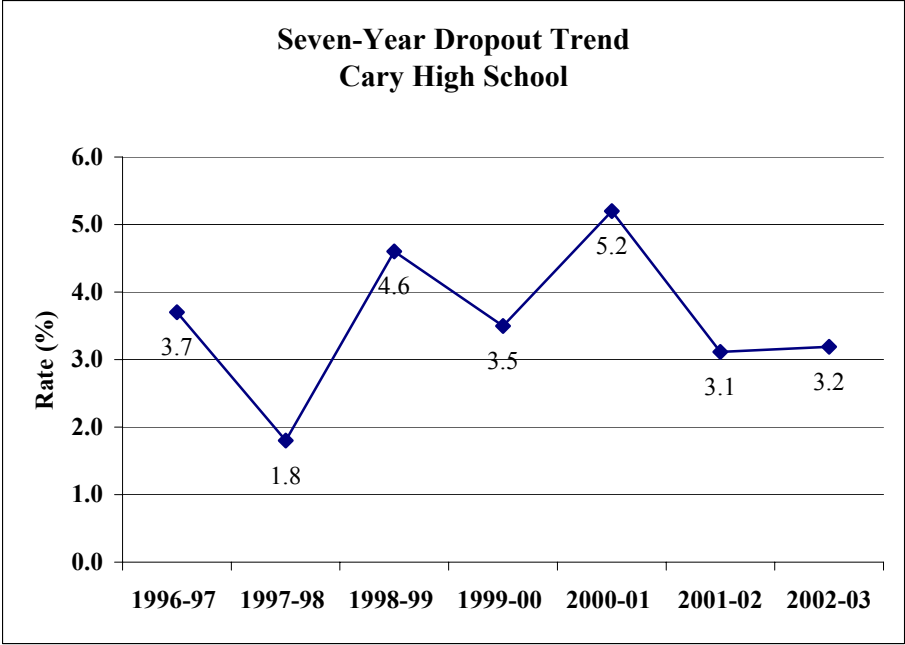


**Seven-Year Dropout Trend  
Apex High School**

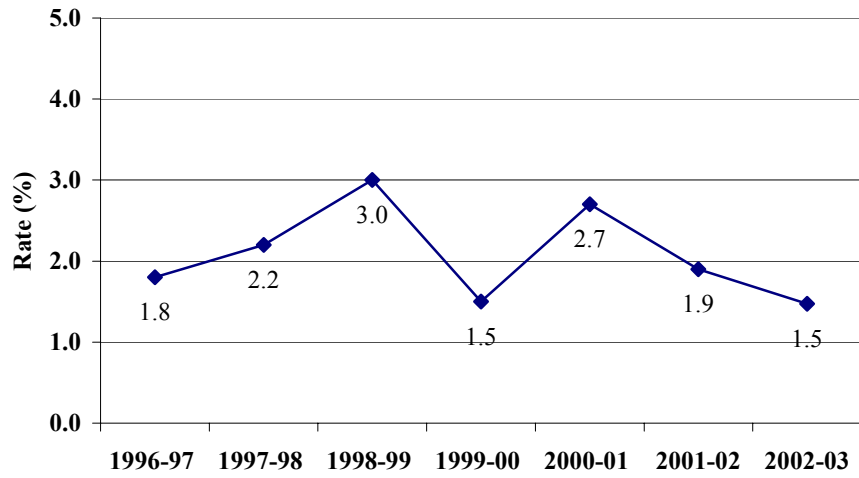


**Seven-Year Dropout Trend  
Athens Drive High School**

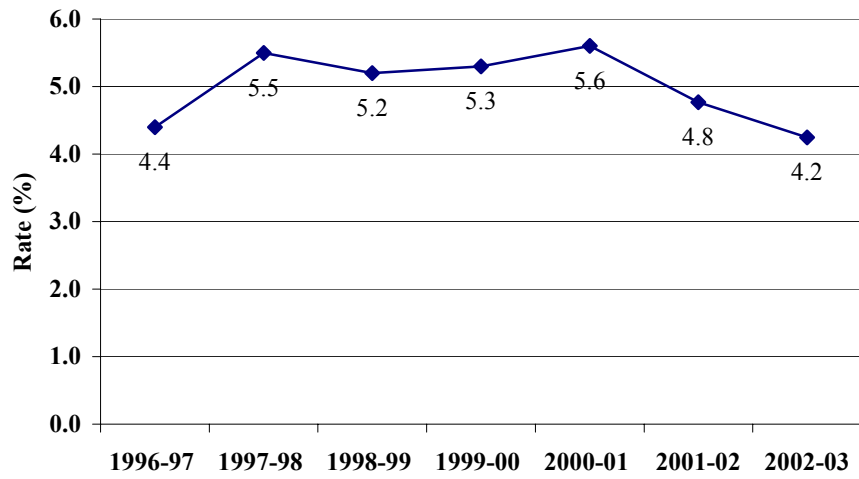


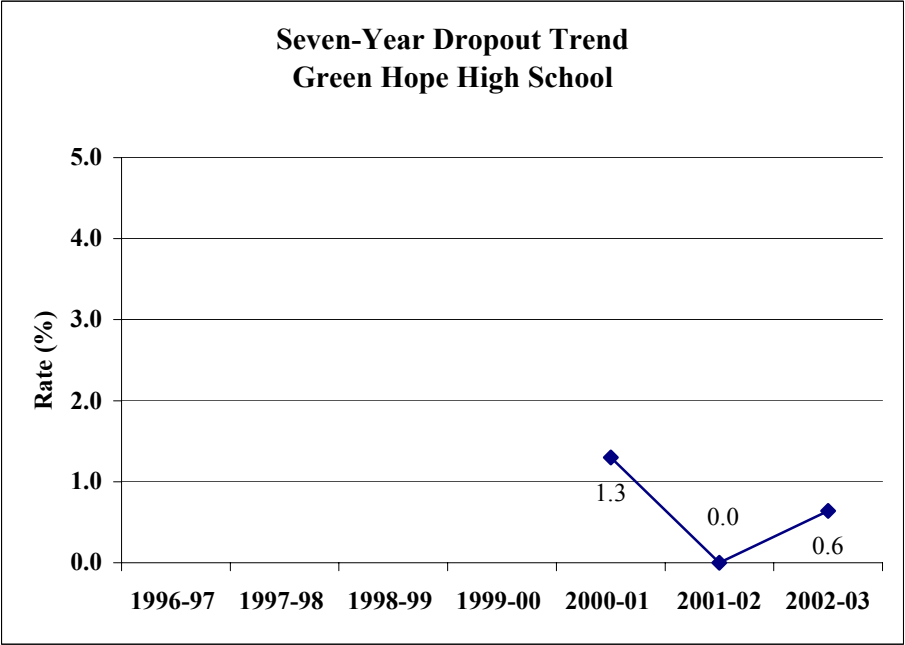
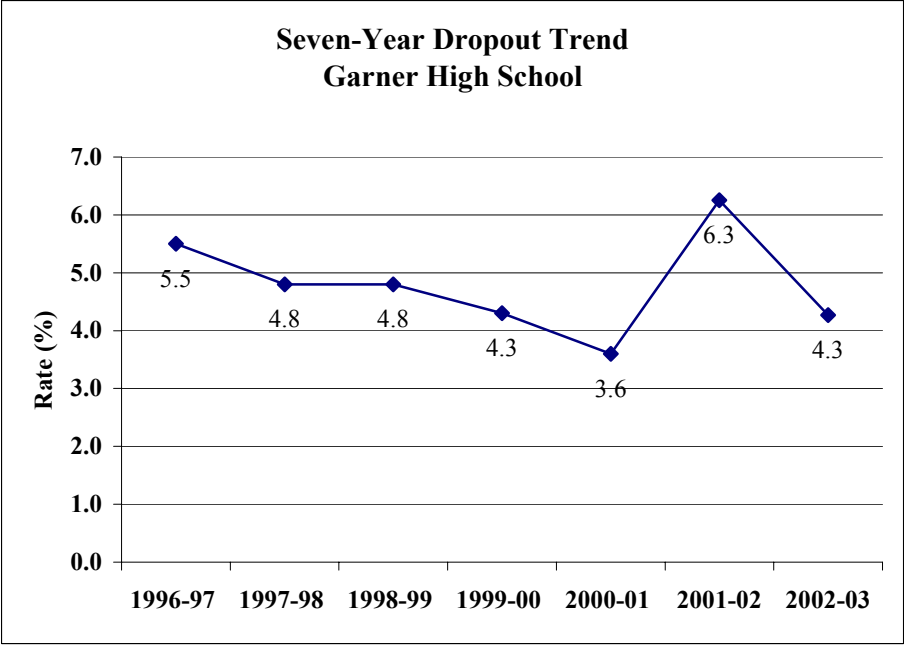


**Seven-Year Dropout Trend  
Enloe High School**

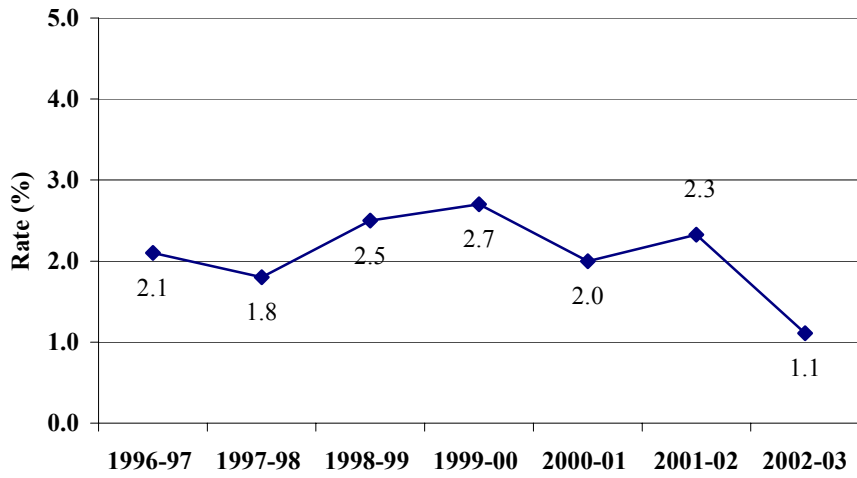


**Seven-Year Dropout Trend  
Fuquay-Varina High School**

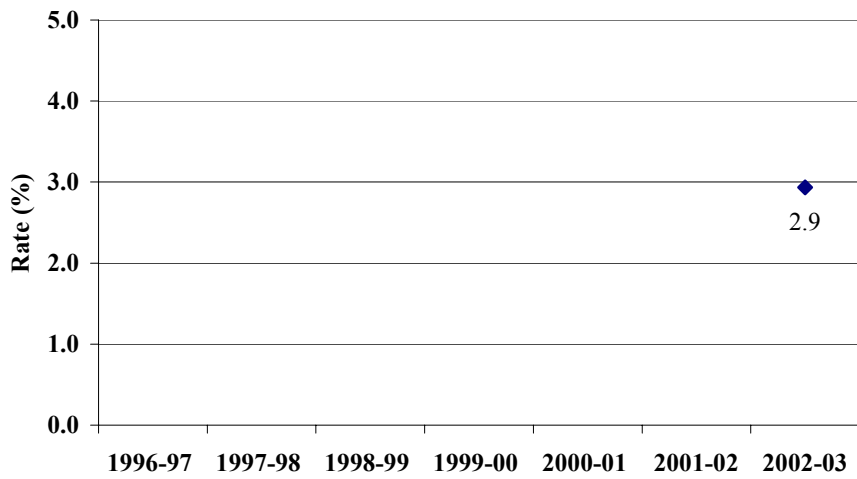


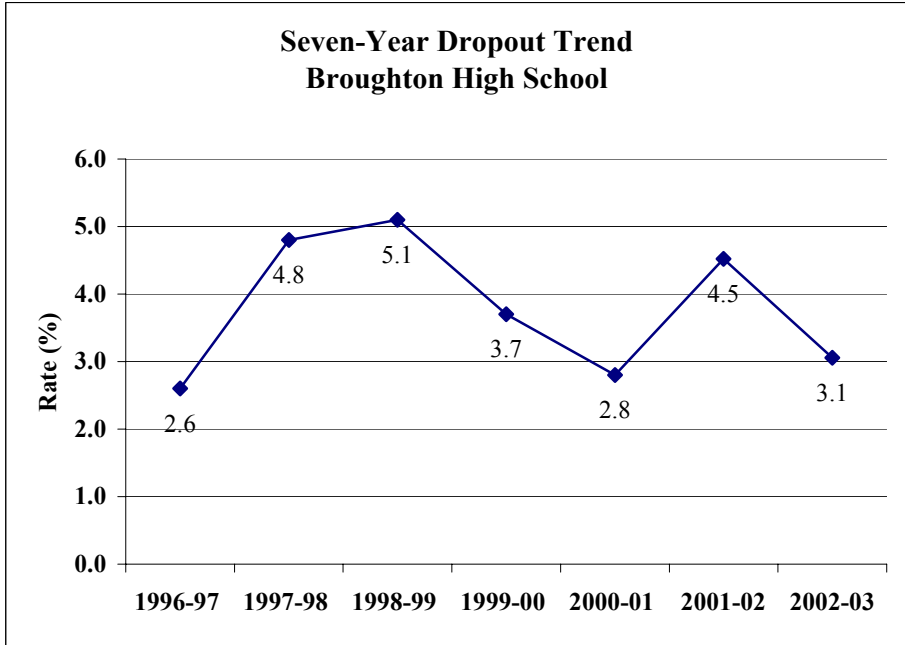
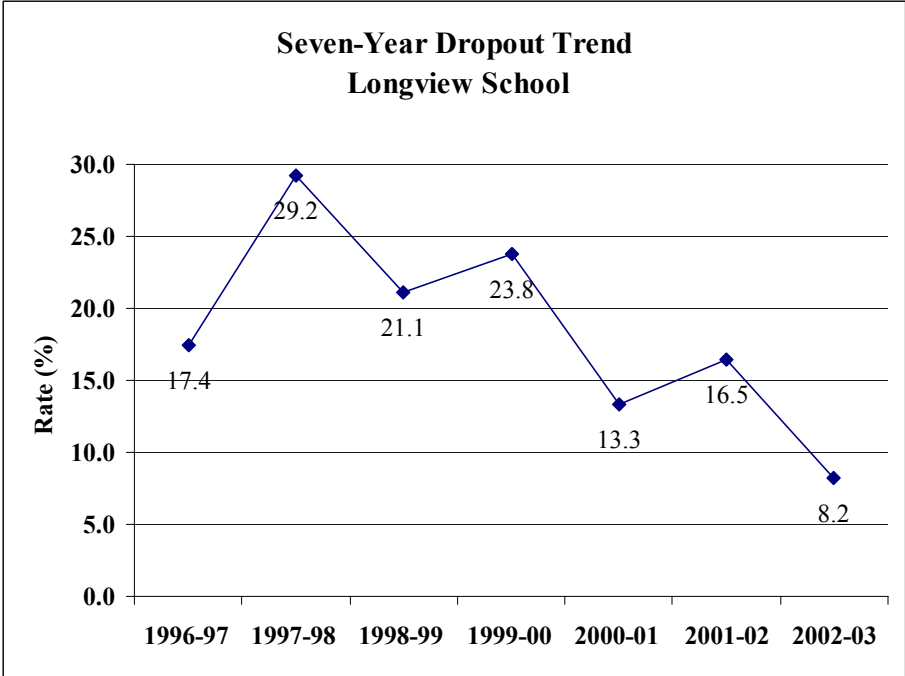


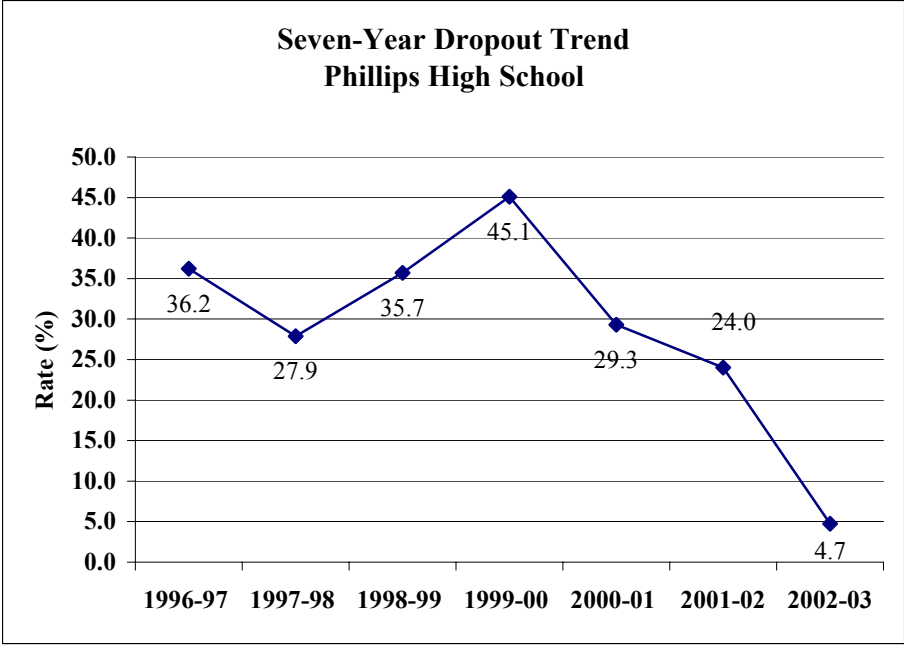
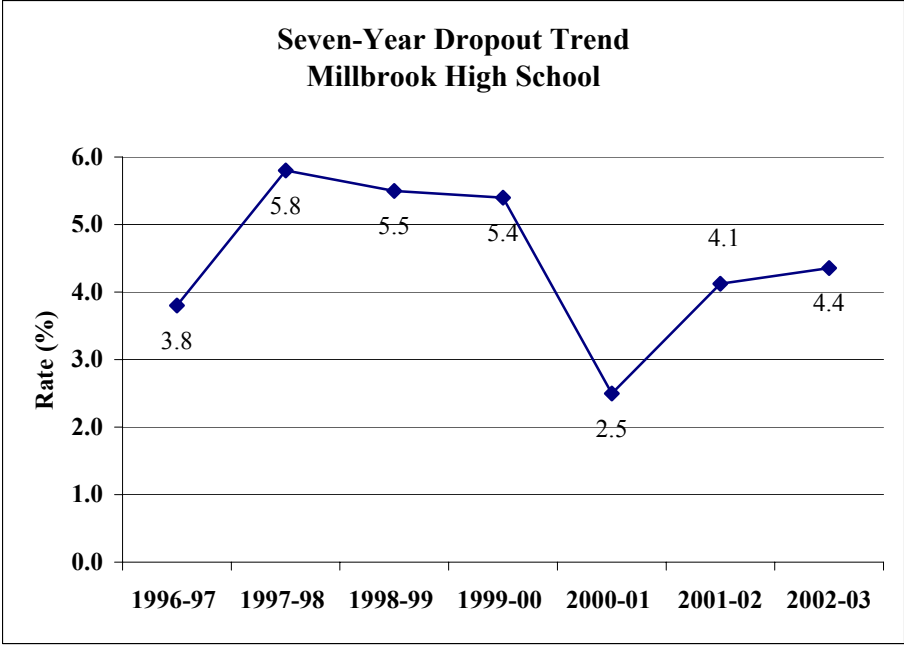
**Seven-Year Dropout Trend  
Leesville Road High School**

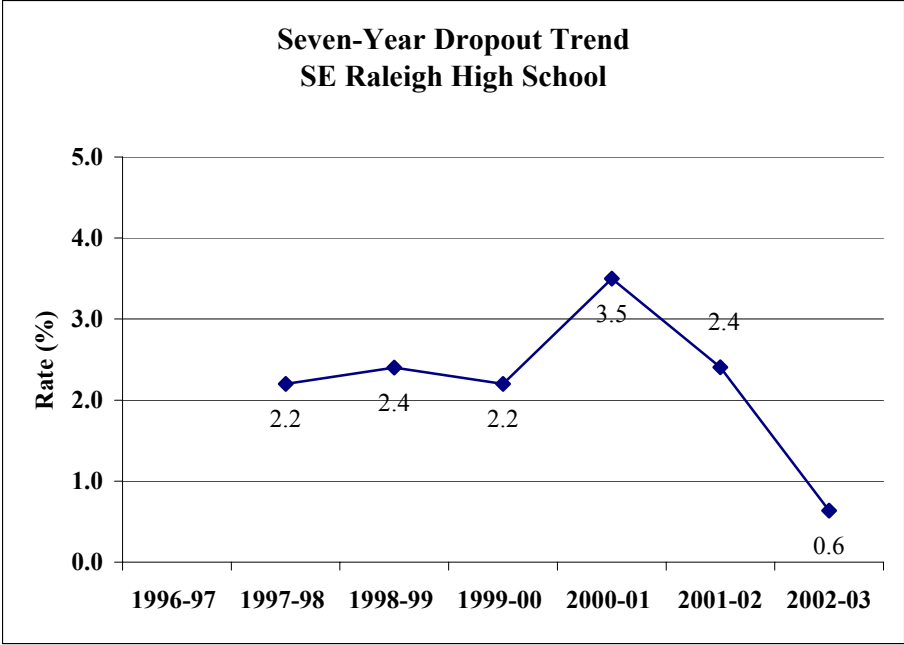
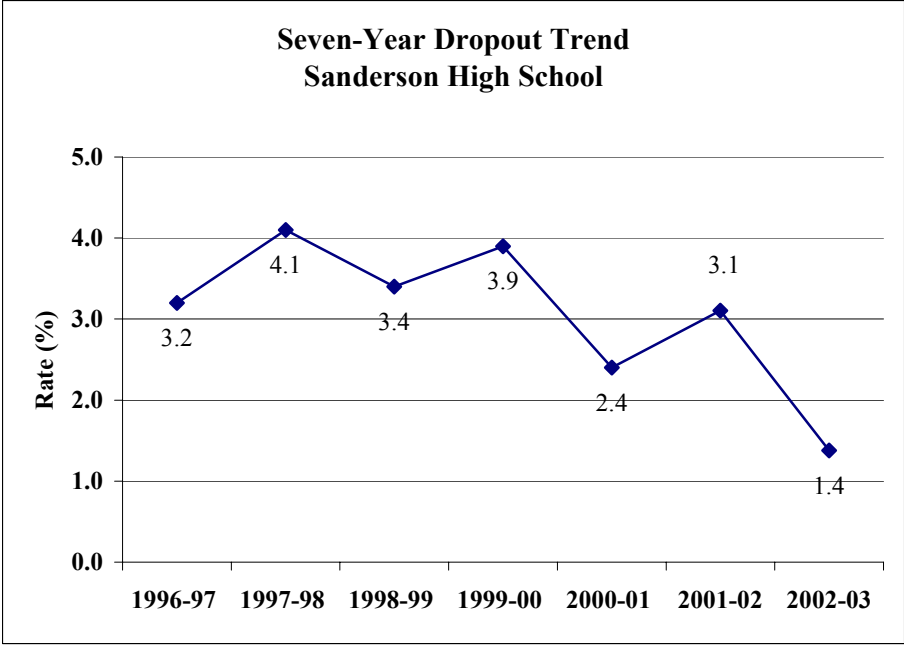


**Seven-Year Dropout Trend  
Middle Creek High School**

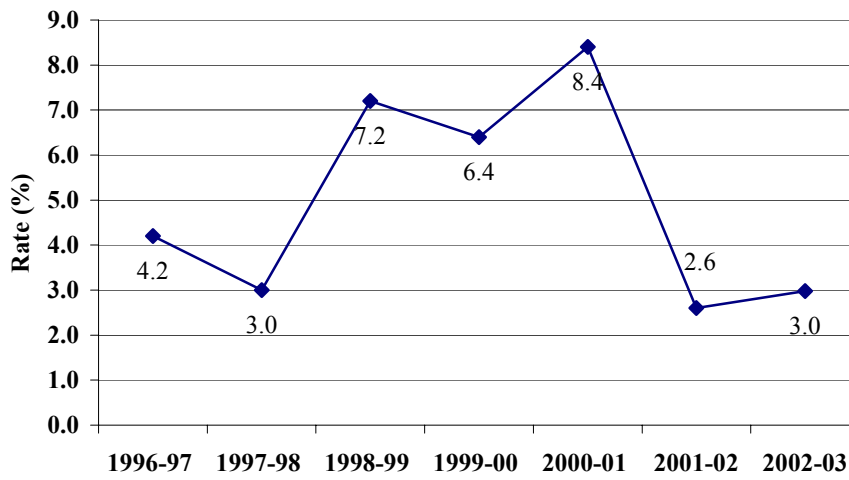




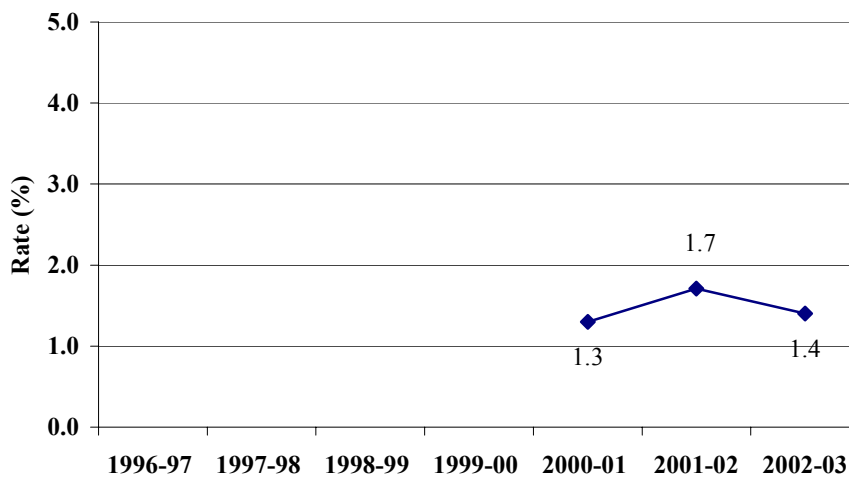




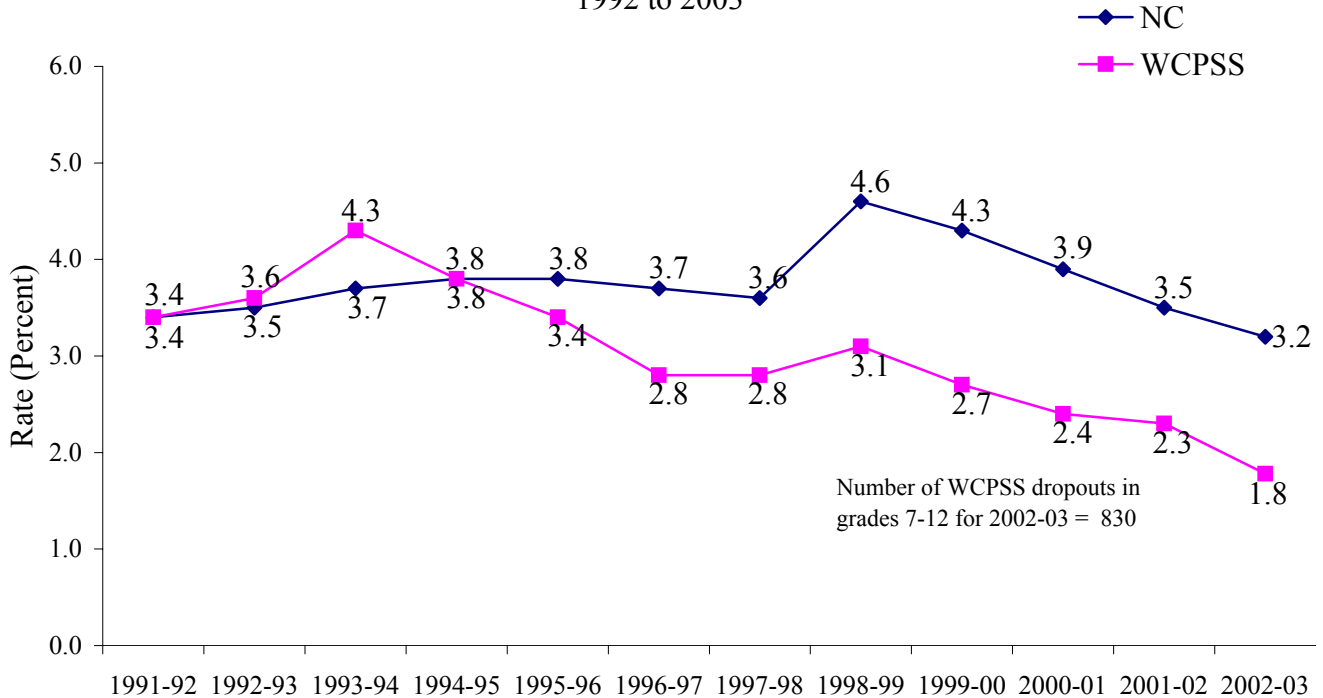
**Seven-Year Dropout Trend  
Wake Forest-Rolesville High School**



**Seven-Year Dropout Trend  
Wakefield High School**

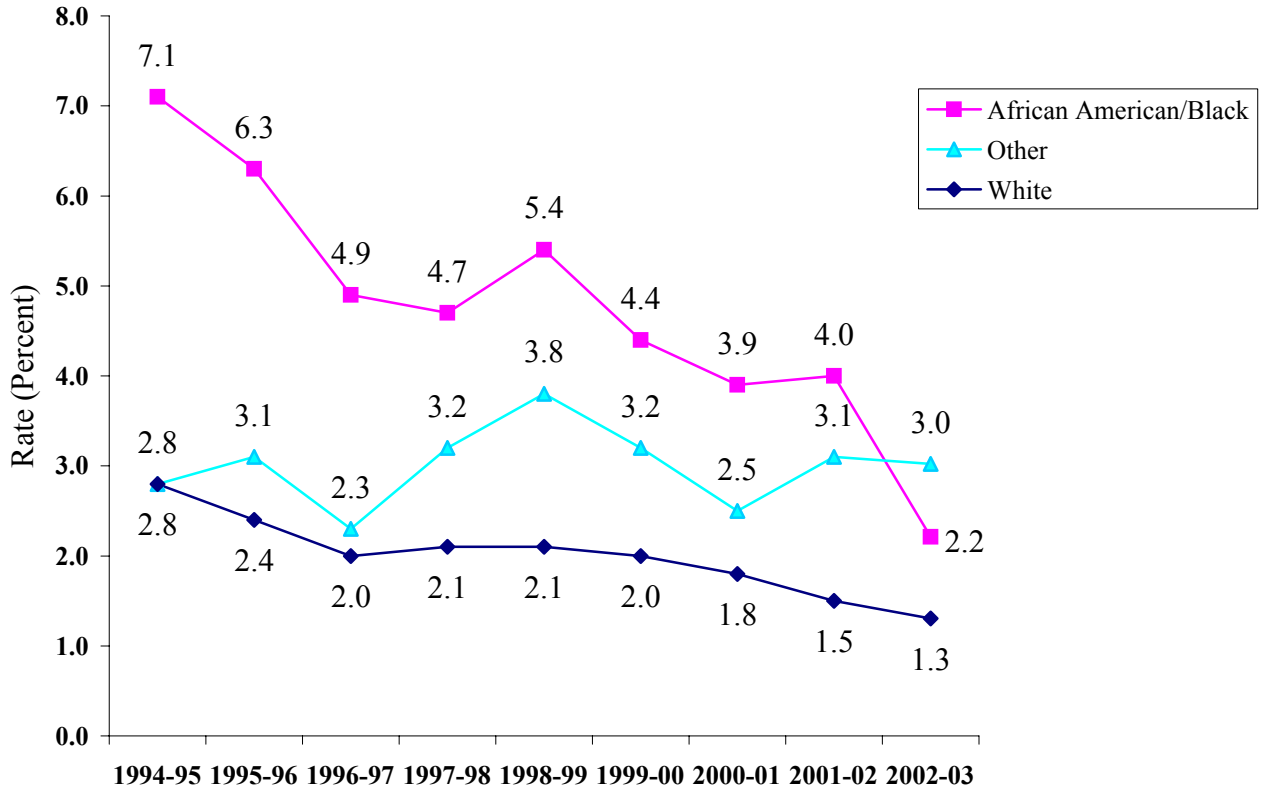


NC and WCPSS Dropout Rates  
 Grades 7-12  
 1992 to 2003



NOTES: 1991-92 was the first year in which dropouts were reported based on federal guidelines and was the first year using the SIMS Dropout Data Summary (DOP-9). Beginning in 1998-99, students transferring to community college GED programs were counted as dropouts.

WCPSS Dropout Rates  
 Grades 7-12 by Ethnic Group  
 1995-2003



NOTE: Beginning in 1998-99, students transferring to community college GED programs were counted as dropouts.

**Grades 7-12 Dropouts  
2002-03**

<b>School</b>				
<b>School</b>	<b>Frequency</b>	<b>Percent</b>	<b>Cumulative Frequency</b>	<b>Cumulative Percent</b>
<b>Apex Middle</b>	1	0.12	1	0.12
<b>Apex High</b>	48	5.78	49	5.90
<b>Athens Drive High</b>	55	6.63	104	12.53
<b>Longview High</b>	8	0.96	112	13.49
<b>Broughton High</b>	65	7.83	177	21.33
<b>Carroll Middle</b>	1	0.12	178	21.45
<b>Cary High</b>	68	8.19	246	29.64
<b>Daniels Middle</b>	1	0.12	247	29.76
<b>Davis Drive Middle</b>	4	0.48	251	30.24
<b>Dillard Middle</b>	2	0.24	253	30.48
<b>Reedy Creek Middle</b>	2	0.24	255	30.72
<b>East Garner Middle</b>	1	0.12	256	30.84
<b>East Millbrook Mid</b>	3	0.36	259	31.20
<b>East Wake Middle</b>	6	0.72	265	31.93
<b>East Wake High</b>	92	11.08	357	43.01
<b>Enloe High</b>	35	4.22	392	47.23
<b>Fuquay-Varina Mid</b>	3	0.36	395	47.59
<b>Fuquay-Varina High</b>	67	8.07	462	55.66
<b>Garner High</b>	83	10.00	545	65.66
<b>Green Hope High</b>	13	1.57	558	67.23
<b>Leesville Road Middle</b>	1	0.12	559	67.35
<b>Leesville Road High</b>	23	2.77	582	70.12
<b>Middle Creek High</b>	25	3.01	607	73.13
<b>Millbrook High</b>	92	11.08	699	84.22
<b>Mt. Vernon Middle</b>	2	0.24	701	84.46
<b>North Garner Middle</b>	2	0.24	703	84.70
<b>Mary E. Phillips High</b>	13	1.57	716	86.27
<b>Sanderson High</b>	24	2.89	740	89.16
<b>Southeast Raleigh H</b>	13	1.57	753	90.72
<b>Wake Forest-R High</b>	42	5.06	795	95.78
<b>Wake Forest-R M</b>	2	0.24	797	96.02
<b>Wakefield High</b>	25	3.01	822	99.04
<b>West Lake Middle</b>	1	0.12	823	99.16

**Grades 7-12 Dropouts  
2002-03**

<b>School</b>				
<b>School</b>	<b>Frequency</b>	<b>Percent</b>	<b>Cumulative Frequency</b>	<b>Cumulative Percent</b>
<b>West Millbrook M</b>	3	0.36	826	99.52
<b>Zebulon Middle</b>	4	0.48	830	100.00

<b>Grade</b>				
<b>Dropout_Grade</b>	<b>Frequency</b>	<b>Percent</b>	<b>Cumulative Frequency</b>	<b>Cumulative Percent</b>
<b>07</b>	6	0.72	6	0.72
<b>08</b>	33	3.98	39	4.70
<b>09</b>	296	35.66	335	40.36
<b>10</b>	191	23.01	526	63.37
<b>11</b>	150	18.07	676	81.45
<b>12</b>	154	18.55	830	100.00

<b>Gender</b>				
<b>gender</b>	<b>Frequency</b>	<b>Percent</b>	<b>Cumulative Frequency</b>	<b>Cumulative Percent</b>
<b>Female</b>	320	38.55	320	38.55
<b>Male</b>	510	61.45	830	100.00

<b>Race</b>				
<b>Race</b>	<b>Frequency</b>	<b>Percent</b>	<b>Cumulative Frequency</b>	<b>Cumulative Percent</b>
<b>American Indian</b>	1	0.12	1	0.12
<b>Asian</b>	32	3.86	33	3.98
<b>Black</b>	285	34.34	318	38.31
<b>Hispanic</b>	104	12.53	422	50.84
<b>Multi-racial</b>	24	2.89	446	53.73
<b>White</b>	384	46.27	830	100.00

**Grades 7-12 Dropouts  
2002-03**

Age				
Dropout_Age	Frequency	Percent	Cumulative Frequency	Cumulative Percent
13	2	0.24	2	0.24
14	13	1.57	15	1.81
15	39	4.70	54	6.51
16	113	13.61	167	20.12
17	231	27.83	398	47.95
18	262	31.57	660	79.52
19	132	15.90	792	95.42
20	30	3.61	822	99.04
21	8	0.96	830	100.00

Reason for Dropping Out				
Reason	Frequency	Percent	Cumulative Frequency	Cumulative Percent
Suspected Substance Abuse	1	0.12	1	0.12
Academic Problems	69	8.31	70	8.43
Attendance Family	5	0.60	75	9.04
Attendance Personal	35	4.22	110	13.25
Attendance School	58	6.99	168	20.24
Attendance	339	40.84	507	61.08
Attendance Work	21	2.53	528	63.61
Commun. Coll. Dropout from Approved Program	71	8.55	599	72.17
Discipline Problems	15	1.81	614	73.98
Employment Necessary	3	0.36	617	74.34
Health Problems	3	0.36	620	74.70
Unstable Home Environment	1	0.12	621	74.82
Incarcerated in Adult Facility	4	0.48	625	75.30
Long-Term Suspension	73	8.80	698	84.10
Marriage	1	0.12	699	84.22
Move-- School Status Unknown	90	10.84	789	95.06
Pregnancy	2	0.24	791	95.30
Runaway	5	0.60	796	95.90
Choice of Work Over School	34	4.10	830	100.00

**Grades 7-12 Dropouts  
2002-03**

<b>Lunch Status</b>				
	<b>Frequency</b>	<b>Percent</b>	<b>Cumulative Frequency</b>	<b>Cumulative Percent</b>
<b>Free</b>	203	24.46	203	24.46
<b>Reduced</b>	32	3.86	235	28.31
<b>Not Free or Reduced</b>	595	71.69	830	100.00

<b>Special Education Status</b>				
	<b>Frequency</b>	<b>Percent</b>	<b>Cumulative Frequency</b>	<b>Cumulative Percent</b>
<b>Not Special Education</b>	627	75.54	627	75.54
<b>Learning Disabled (LD)</b>	83	10.00	710	85.54
<b>Other Health Impaired (OHI)</b>	29	3.49	739	89.04
<b>Behaviorally/Emotionally Disabled (BED)</b>	40	4.82	779	93.86
<b>Educable Mentally Disabled (EMD)</b>	15	1.81	794	95.66
<b>Academically Gifted (AG)</b>	34	4.10	828	99.76
<b>Speech/Language Impaired (SI/LI)</b>	1	0.12	829	99.88
<b>Trainable Mentally Disabled (TMD)</b>	1	0.12	830	100.00