

2007-08 WCPSS Dropout Rate

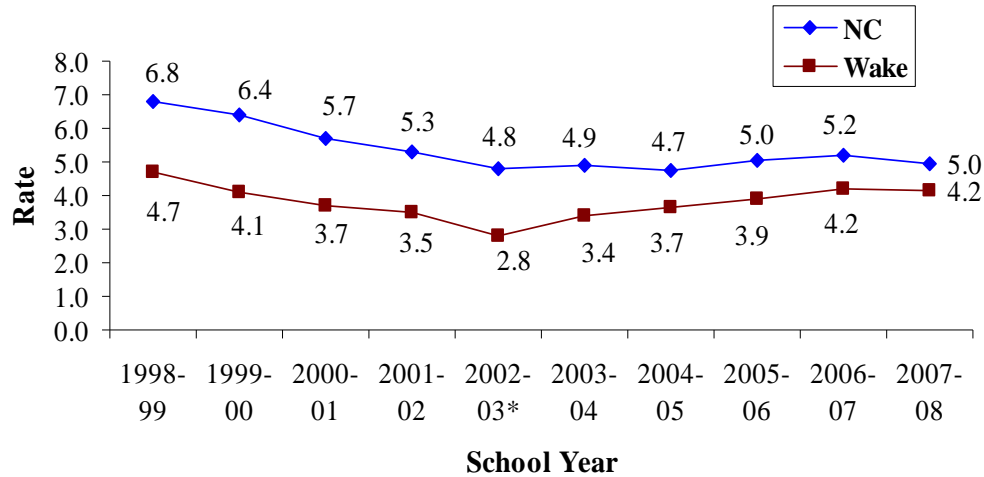
On February 5th, 2009, the North Carolina Department of Public Instruction released its annual statewide Dropout Report covering the 2007-08 school year. The charts below show the dropout rate for WCPSS compared to the state as a whole, to other large school districts in North Carolina, and by race. Note that rates are rounded to one decimal place in the charts. These analyses reveal the following:

- Stopping a four-year increase, the WCPSS dropout rate for grades 9-12 was 4.17% in 2007-08, down slightly from 4.24% in 2006-07. The actual number of dropouts increased by 42, but because the number of students in membership increased proportionately more, the rate declined. The state's rate also showed a decrease-- from 5.24% to 4.97%.
- Other large school districts in North Carolina, Durham (4.19), Forsyth (5.49), and Mecklenburg (5.91), had higher dropout rates in 2007-08 than did WCPSS, while Guilford (3.31) remained lower. Of those districts, only WCPSS and Guilford have had a rate below the state average in each of the past ten years.
- WCPSS dropout rates declined in 2007-08 for Hispanic students for the second year in a row and for Asian students for the third year in a row. The rate for Black students increased, while the rates for White students and for Multi-racial students decreased. Note that the Asian and Multi-racial student groups constitute less than five percent of the total dropout group; therefore, their rates may fluctuate more from year to year than rates for the other racial subgroups. No data are reported for Native American students due to very low numbers (five or fewer) in that group.



WAKE COUNTY
PUBLIC SCHOOL SYSTEM

**NC and WCPSS Dropout Rates
Grades 9-12
1999-2008**



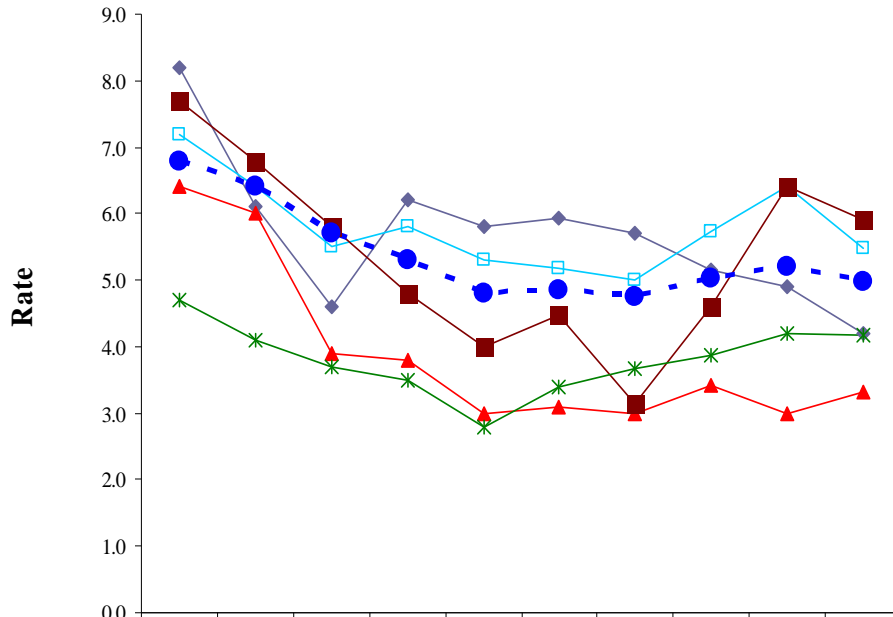
* The 2002-03 dropout rate is higher than the rate DPI reports because additional dropouts were discovered after the official data submission to DPI.

**WCPSS Dropout Rates and Counts
Grades 9-12**

	2005-06	2006-07	2007-08
Rate	3.9%	4.2%	4.2%
Count	1437	1647	1689

* Dropout counts are unduplicated within a single school year. For example, a student who drops out more than once within a school year is counted only once as a dropout for that year. Students who drop out in more than one school year are counted as a dropout for each of those years.

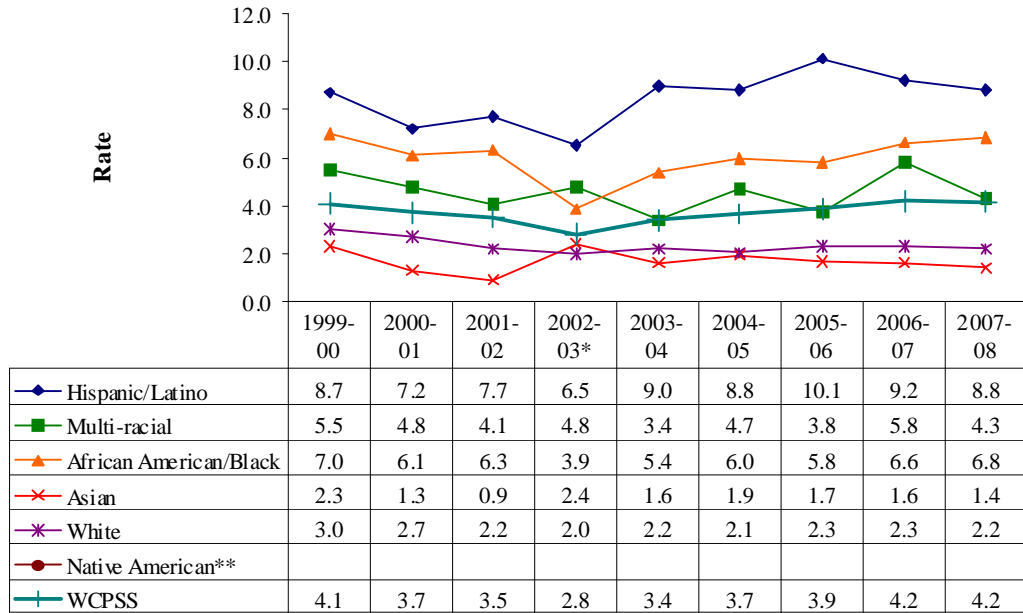
Grades 9-12 Dropout Rates for Selected Districts



	1998-99	1999-00	2000-01	2001-02	2002-03*	2003-04	2004-05	2005-06	2006-07	2007-08
—◆— Durham	8.2	6.1	4.6	6.2	5.8	5.9	5.7	5.2	4.9	4.2
—□— Forsyth	7.2	6.4	5.5	5.8	5.3	5.2	5.0	5.7	6.4	5.5
—▲— Guilford	6.4	6.0	3.9	3.8	3.0	3.1	3.0	3.4	3.0	3.3
—■— Mecklenburg	7.7	6.8	5.8	4.8	4.0	4.5	3.1	4.6	6.4	5.9
—*— Wake	4.7	4.1	3.7	3.5	2.8	3.4	3.7	3.9	4.2	4.2
- -●- - NC	6.8	6.4	5.7	5.3	4.8	4.9	4.7	5.0	5.2	5.0

* The 2002-03 dropout rate is higher than the rate DPI reports because additional dropouts were discovered after the official data submission to DPI.

**Dropout Rates by Ethnic Group
Grades 9-12
2000-2008**



* The 2002-03 dropout rate is higher than the rate DPI reports because additional dropouts were discovered after the official data submission to DPI.

**The Native American values are blank because of insufficient data.